

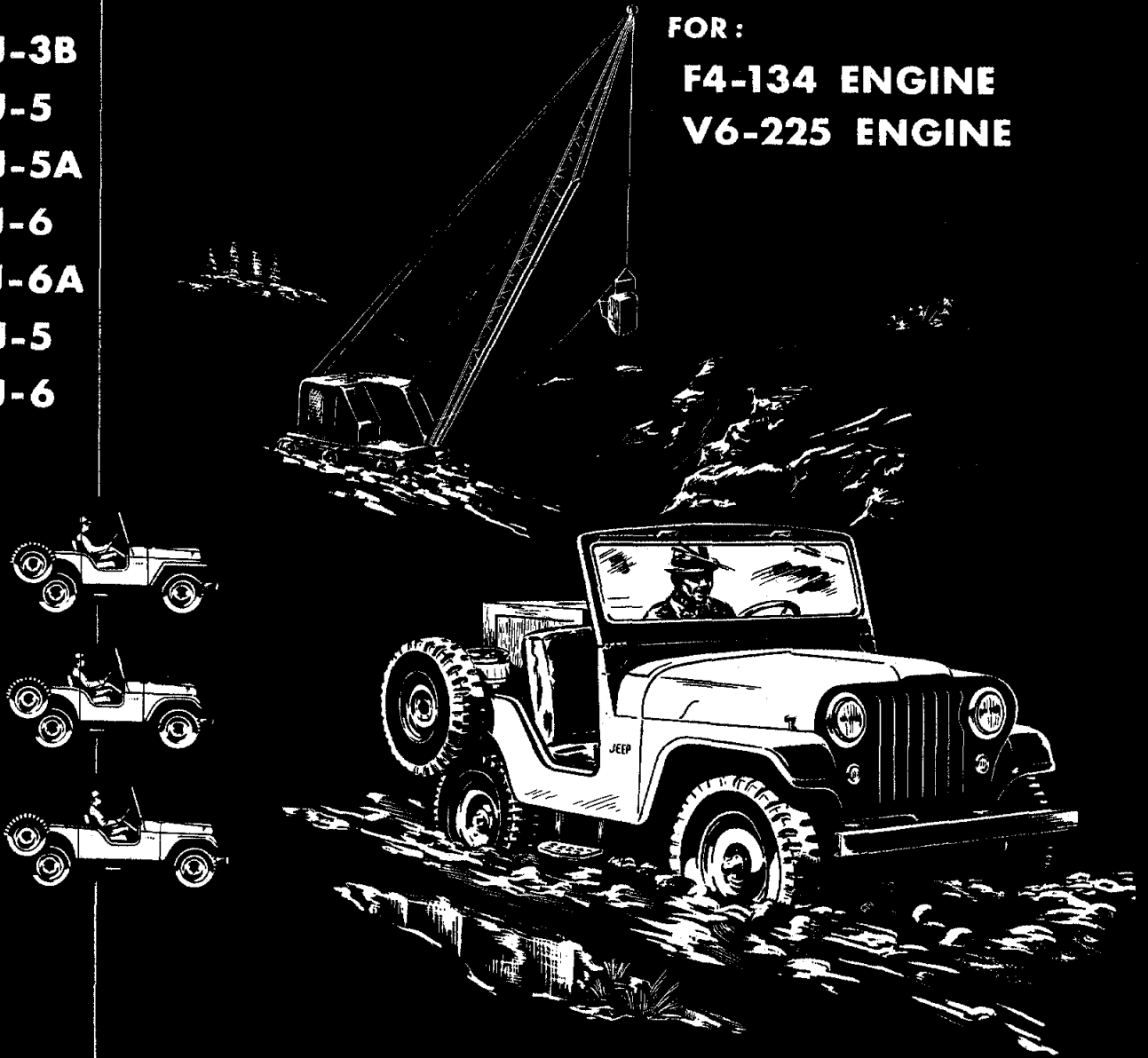
Jeep® Universal Parts List

CJ-3B
CJ-5
CJ-5A
CJ-6
CJ-6A
DJ-5
DJ-6

FOR :

F4-134 ENGINE

V6-225 ENGINE



KAISER Jeep CORPORATION

Fig. and Ref. No.	Part Number	DESCRIPTION	MODELS									
			V6	4F	CJ3B	CJ5	CJ5A	CJ6	CJ6A	DJ5	DJ6	
GROUP 15-05 - IGNITION COIL												
27-10	649712	Coil, ignition (6 volt)	X	1	1	1	1	1	1	1	1	1
	933160	Coil, ignition (12 volt)	X	1	1	1	1	1	1	1	1	1
GM-271175		Nut and lockwasher	X	2	2	2	2	2	2	2	2	2
	635886	Stud, 1/4"-20 x 1"	X	2	2	2	2	2	2	2	2	2
27-9	910353	Cable, ignition coil, primary	X	1	1	1	1	1	1	1	1	1
	943062	Bracket, coil mounting and spring anchor	X		1	1	1	1	1	1	1	1
GM-455305		Screw and lockwasher, 5/16"-24 x 5/8"	X		1	1	1	1	1	1	1	1
		(Coil bracket and bracket to manifold)										
	1115202	Coil, ignition, assembly (1965-66-67)	X		1	1	1	1	1	1	1	1
	932547	Coil, ignition, assembly (1968)	X		1		1		1		1	1
	938987	Resistor, ignition (Use with Delco coil)	X		1	1	1	1	1	1	1	1
	929992	Resistor, ignition (1968)	X		1		1		1		1	1
	GM-162077	Screw, #14-10 x 3/4"	X		1	1	1	1	1	1	1	1
	GM-121753	Lockwasher, 1/4"	X		1	1	1	1	1	1	1	1
		(Resistor to dash)										
GROUP 15-06 - SPARK PLUG AND WIRES												
6-6	808419	Bracket, spark plug cable	X	1	1	1	1	1	1	1	1	1
	GM-120393	Washer, plain, 5/16"	X	1	1	1	1	1	1	1	1	1
		(Ignition cable bracket to rocker cover stud)										
27-8	911792	Cable, secondary, ignition coil (W/suppressor)	X	1	1	1	1	1	1	1	1	1
	910803	Capacitor, assembly	X	3	3	3	3	3	3	3	3	3
6-2	805384	Clip, spark plug cable, lower	X	1	1	1	1	1	1	1	1	
6-3	805383	Clip, spark plug cable, upper	X	1	1	1	1	1	1	1	1	
6-1	GM-161892	Screw, pan hd., No. 10-12 x 3/8"	X	1	1		1		1		1	
27-31	930456	Kit, ignition spark plug cable	X	1	1	1	1	1	1	1	1	1
		Consists of:										
	932546	1 Cable, secondary, ignition coil, assembly										
	932542	1 Cable, ignition, spark plug, No. 1										
	932543	1 Cable, ignition, spark plug, No. 2										
	932544	1 Cable, ignition, spark plug, No. 3										
	932545	1 Cable, ignition, spark plug, No. 4										
3-10	804492	Plug, spark, assembly (J-8) (Champion)	X	4	4	4	4	4	4	4	4	4
		Set, ignition cable (W/suppressor)	X	1	1	1	1	1	1	1	1	1
		Consists of:										
		1 Cable, spark plug, No. 1										
		1 Cable, spark plug, No. 2										
		1 Cable, spark plug, No. 3										
		1 Cable, spark plug, No. 4										
	94563	Plug, spark, assembly	X		6	6	6	6	6	6	6	6
	1352299	Retainer, spark plug cables	X		2	2	2	2	2	2	2	2
	6286251	Set, cables, ignition (Single throat carburetor)	X		1	1	1	1	1	1	1	1
		Consists of:										
		1 Cable, spark plug, No. 1										
		1 Cable, spark plug, No. 2										
		1 Cable, spark plug, No. 3										
		1 Cable, spark plug, No. 4										

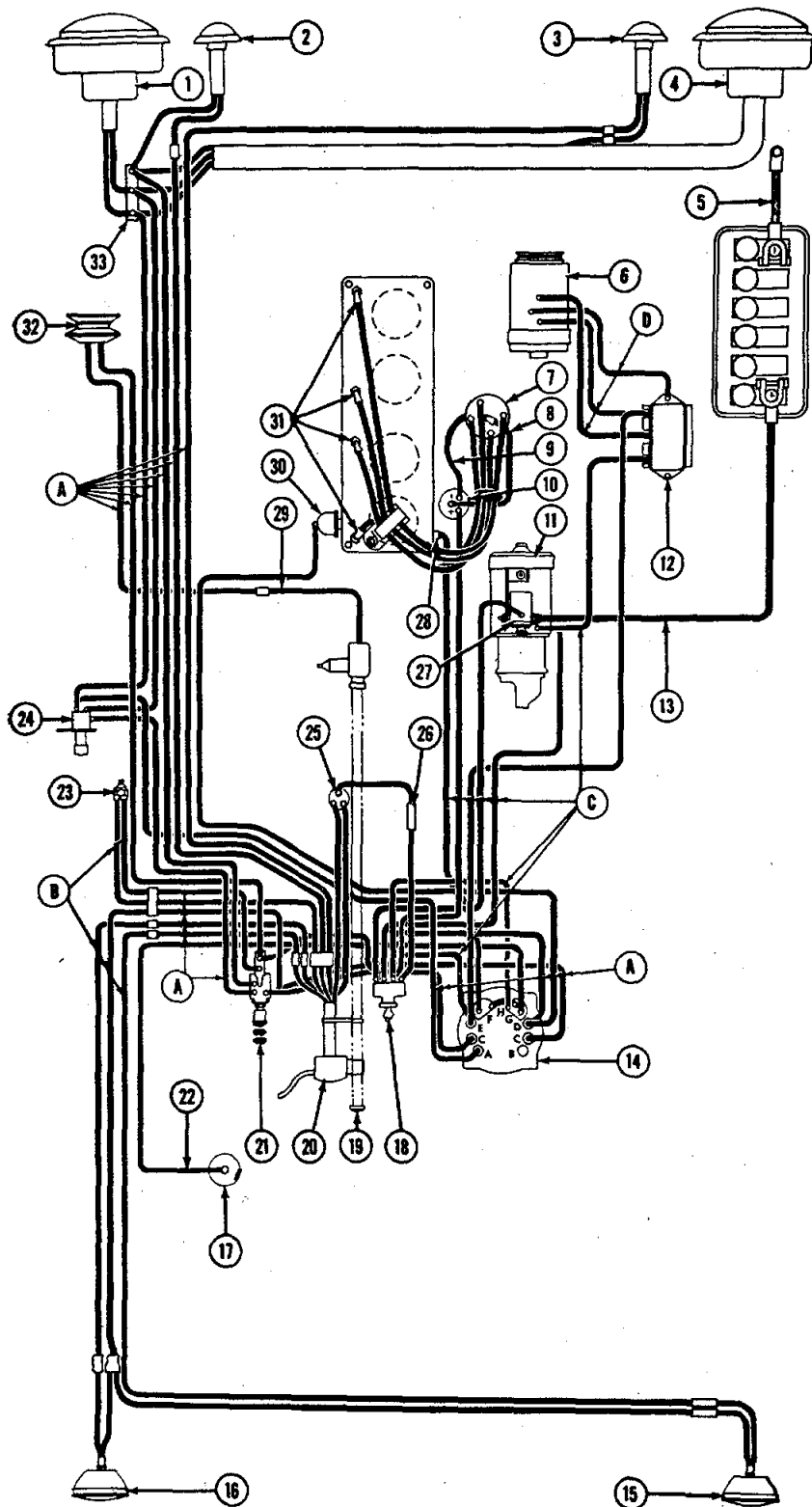


FIGURE 27

BODY AND CHASSIS WIRING DIAGRAM (CJ3B) (CJ5) (CJ6) (CJ5A) (CJ6A) (DJ5) (DJ6)

FIGURE 27

BODY AND CHASSIS WIRING DIAGRAM (CJ3B) (CJ5) (CJ6) (CJ5A) (CJ6A) (DJ5) (DJ6)

Ref. No.	Part No.	Description	Group No.
1	924392	Headlight, left, assembly	15-09
2	809659	Light, parking and signal, left	15-09A
3	809660	Light, parking and signal, right	15-09A
4	924393	Headlight, right, assembly	15-09
5	919345	Cable, battery ground	15-18A
6	924178	Generator assembly	15-01
7	923068	Distributor, assembly	15-03
8	911792	Cable, secondary, ignition coil	15-06
9	910353	Cable, ignition coil primary	15-05
10	649712	Coil, ignition	15-05
11	924885	Motor, starting	15-02
12	923130	Regulator, voltage	15-04
13	919337	Cable, positive, battery	15-18A
14	914845	Cluster, instrument	16-04
15	938894	Light, tail and stop, right	15-09B
16	938893	Light, tail and stop, left	15-09B
17	914850	Gauge, fuel, assembly (Tank unit)	12-02
18	924918	Switch, ignition and starter, assembly	15-13A
19	927416	Button horn	15-17A
20	916807	Switch, directional signal	15-09G
21	924789	Switch, lighting	15-12A
22	912024	Cable, fuel gauge to tank unit	15-07
23	647801	Switch, stop light	15-14
24	811681	Switch, foot dimmer	15-12
25	938899	Flasher, directional signal	15-09G
26	-----	Fuse	N. S.
27	919294	Switch, solenoid	15-02
28	914847	Plug, heat indicator	16-01
29	938423	Cable, horn, assembly	15-17A
30	941968	Switch, signal, oil pressure	16-01
31	930456	Kit, spark plug cable	15-06
32	926595	Horn	15-17
33	638977	Block, junction	15-07
A	938202	Harness, underbody	15-07
B	912268	Harness, chassis	15-07
C	912121	Harness, body wiring, right side (CJ3B)	15-07
D	924088	Harness, wiring, generator to voltage regulator (CJ3B)	15-07

Fig. and Ref. No.	Part Number	DESCRIPTION	MODELS										
			V6	4F	CJ3B	CJ5	CJ5A	CJ6A	DJ5	DJ6			
GROUP 15-06 - SPARK PLUG AND WIRES (Continued)													
	6287797	1 Cable, spark plug, No. 5 1 Cable, spark plug, No. 6 1 Cable, high tension Set, cables, ignition (Dual throat carburetor) Consists of: 1 Cable, spark plug, No. 1 1 Cable, spark plug, No. 2 1 Cable, spark plug, No. 3 1 Cable, spark plug, No. 4 1 Cable, spark plug, No. 5 1 Cable, spark plug, No. 6	X			1	1	1	1	1	1		
	6292225	Set, cables ignition (1967)	X			1	1	1	1	1	1		
GROUP 15-07 - BODY AND CHASSIS WIRING													
Note #1: Up to Serial No. 57348 - 34452 (CJ-3B) 57548 - 38241 (CJ-5) 57748 - 10648 (CJ-6)													
Note #2: After Serial No. 57348 - 34452 (CJ-3B) 57548 - 38241 (CJ-5) 57748 - 10646 (CJ-6)													
27-33	638977	Block, junction.	X	X	1	1	1	1	1	1	1		
	GM-160505	Screw, pan hd., 1/4"-20 x 3/8".	X	X	2	2	2	2	2	2	2		
	GM-271172	Nut and lockwasher, hex., 1/4"-20 (Junction block to splash apron)	X		2	2	2	2	2	2	2		
27-22	912021	Cable, fuel gauge (Dash to tank unit)	X	X	1		1	1	1	1	1		
	912024	Cable, fuel gauge (Dash to tank unit)	X	X	1		1	1	1	1	1		
	948172	Cable, light switch circuit breaker to stop light switch . . .	X	X	1		1	1	1	1	1		
	805057	Cable, tail light, left	X	X	1		1	1	1	1	1		
	934483	Cable, assembly (Parking lamp to junction block)	X	X	1	1	1	1	1	1	1		
	644106	Clip, 1/8" (Harness to side and rear crossmember)	X	X	*	*	*	*	*	*	*		
	GM-120522	Clip, 5/16"	X		1	1	1	1	1	1	1		
	GM-271166	Nut and lockwasher, #10-24	X		1	1	1	1	1	1	1		
	GM-159920	Screw, pan hd., #10-24 x 1/2" (Foot dimmer switch cable to left side)	X		1	1	1	1	1	1	1		
	941969	Clip, mounting retainer	X		1	1	1	1	1	1	1		
	927663	Clip, wire harness (Nylon)	X	X	*	*	*	*	*	*	*		
	941131	Clip, wire harness (Nylon 1/2")	X	X	1	1	1	1	1	1	1		
	635981	Connector, 2-wire slip type	X	X	*	*	*	*	*	*	*		
	635982	Connector, 6-wire slip type	X	X	*	*	*	*	*	*	*		
	635985	Connector (3-way) (Left and right tail light and license lamp) .	X		1	1	1	1	1	1	1		
	936242	Grommet, 11/16"	X	X	1	1	1	1	1	1	1		
	932048	Harness, alternator to regulator (12 volt 60 amp) (Use with regulator 931776)	X	1									
	937268	Harness, alternator to regulator (Up to Serial 8322-17410 - 8422-10457)	X			1		1					
	941788	Harness, alternator to regulator	X		1	1	1	1	1	1	1		
	808296	Harness, body wiring, right side (See Note No. 1)	X	1									
(*) As Required													

Fig. and Ref. No.	Part Number	DESCRIPTION	MODELS											
			V6	4F	CJ3B	CJ5	CJ5A	CJ6	CJ6A	DJ5	DJ6			
GROUP 15-07 - BODY AND CHASSIS WIRING (Continued)														
27-C	912121	Harness, body wiring, right side (See Note No. 2)	X	1										
	934239	Harness, body wiring, right side (Use with 931776 and 60 amp alternator)	X	1										
	647829	Harness, chassis wiring (See Note No 1)	X	1										
	907227	Harness, chassis wiring (See Note No 1)	X		1									
27-B	922453	Harness, chassis R. H. D. (Up to Serial 8322-17410)	X				1							
	912268	Harness, chassis wiring (With directional signal cables) . . Up to Serial 8305-231374 8422-10457 8322-17410 8505-12186 8405-33590 8605-11359	X	X	1	1	1	1	1	1	1	1	1	1
	946765	Harness, chassis wiring (W/directional signal cables) After Serial 8305-231374 8422-10457 8322-17410 8505-12186 8405-33590 8605-11359	X	X		1	1					1		
	946768	Harness, chassis wiring After Serial 8305-231374 8422-10457 8322-17410 8505-12186 8405-33590 8605-11359	X	X				1	1				1	
	948170	Harness, chassis wiring (W/directional signal cables) (Use with dual stop light switches) (After Serial #)	X	X		1								
	948171	Harness, chassis wiring (Use with dual stop light switches). After Serial #	X	X				1					1	
	946502	Harness, engine wiring, assembly (Generator) After Serial 8305-230064 RHD 8405-33345 RHD 8505-12121 RHD 8605-11216 RHD	X			1		1			1	1	1	1
	946582	Harness, engine wiring, assembly (Alternator) After Serial 8322, 8422)	X				1			1				
	933657	Harness, license lamp, wiring	X				1			1				
	912660	Harness, license lamp, wiring	X			1	1					1		
	GM-271166	Nut and lockwasher, #10-24	X			1	1					1		
	GM-159920	Screw, #10-24 x 1/2" (Ground cable to frame).	X			1	1					1		
	GM-178378	Lockwasher, #10 (Ground cable to license lamp)	X			1	1					1		
	GM-120524	Clip, closed, 7/16"	X			1	1					1		
	GM-271166	Nut and lockwasher, #10-24	X			1	1					1		
	GM-159920	Screw, #10-24 x 1/2" (License lamp cable to tail gate) . . .	X			1	1					1		
	941792	Harness, starting motor and alternator (Use with 1966 engine)	X			1	1	1	1	1	1	1	1	1
	945657	Harness, starting motor and alternator (1967 engine) Up to Serial 8305-231374 8422-10457 8322-17410 8505-12186 8405-33590 8605-11359	X			1	1	1	1	1	1	1	1	1
	946509	Harness, starting motor and alternator After Serial 8305-231374 8422-10547 8322-17410 8505-12186 8405-33590 8605-11359	X			1	1	1	1	1	1	1	1	1
27-A	925133	Harness, underbody wiring (With directional signal cables) . .	X	1										
	938202	Harness, underbody wiring (With directional signal cables) . .	X		1			1				1	1	
	938204	Harness, underbody wiring (With directional signal cables) . .	X				1			1				
	922951	Harness, underbody wiring (With directional signal cables) (Use with Delco-Remy)	X			1			1					

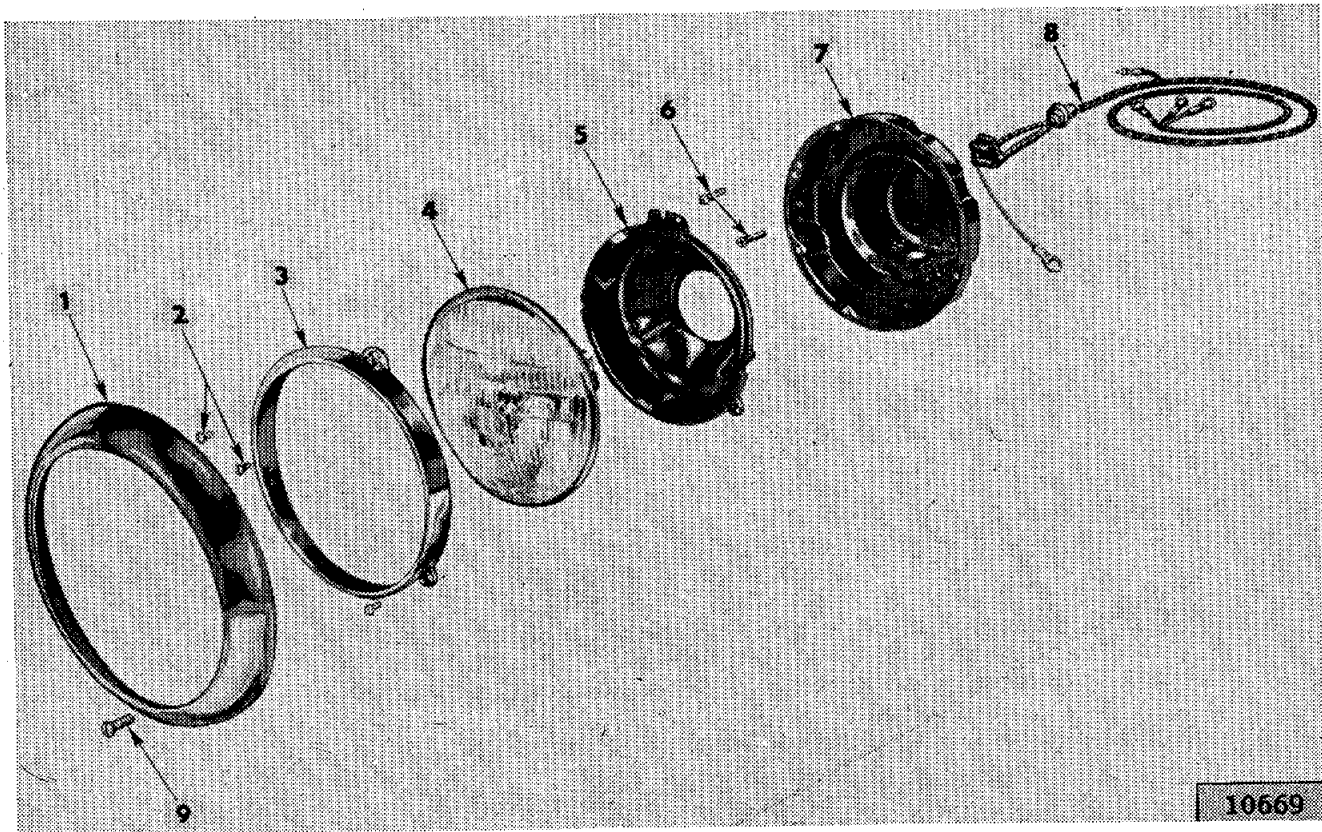


FIG. 28 - HEADLIGHT (CJ3B) (CJ5) (CJ6) (CJ5A) (CJ6A) (DJ5) (DJ6)

Ref. No.	Part No.	Description	Group No.
1	649578	Door, headlight	15-09
2	GM-450211	Screw, fil. hd., No. 8-32 x 3/8"	15-09
3	908578	Ring, unit retaining	15-09
4	924214	Sealed beam unit	15-09
5	908576	Ring, unit mounting	15-09
6	908577	Screw, adjusting	15-09
7	908688	Housing	15-09
8	642988	Wires	15-09
9	GM-179349	Screw, door	15-09

Fig. and Ref. No.	Part Number	DESCRIPTION	MODELS										
			V6	4F	CJ3B	CJ5	CJ5A	CJ6	CJ6A	DJ5	DJ6		
GROUP 15-07 - BODY AND CHASSIS WIRING (Continued)													
	928293	Harness, underbody wiring (Use W/alternator)	X		1		1						
	935840	Harness, underbody wiring (Use with directional signals) (With regulator 931776).	X		1	1	1	1	1	1	1	1	1
	938275	Harness, underbody wiring (With directional signal cables) (Use with 934480 alternator 40 amp.).	X		1	1	1	1	1	1	1	1	1
	938995	Harness, underbody wiring (With directional sign (Use when oil pressure sending unit is at rear of block) . .	X			1		1					
	941780	Harness, underbody wiring (1966).	X	X	1	1	1	1	1	1	1	1	1
	946589	Harness, underbody wiring	X	X	1	1	1	1	1	1	1	1	1
		After Serial 8305-231374 8422-10457											
		8322-17410 8505-12186											
		8405-33590 8605-11859											
	947003	Harness, underbody wiring (RHD).	X		1		1			1	1		
		After Serial 8305-230064											
		8405-33345											
		8505-12121											
		8605-11210											
	924088	Harness, wiring, generator to voltage regulator	X		1								
	922168	Harness, wiring, generator to voltage regulator (For Delco-Remy).	X		1								
	640282	Plug, connector, 2-way (Tail lamp).	X		1	2		2					
	809223	Retainer, harness	X		1	1	1	1	1	1	1	1	1
	306688	Sleeve, insulator	X	*	*	*	*	*	*	*	*	*	*
	912485	Sleeve, insulator	X		3	2		2					
	925062	Terminal, contact (Female) (Spade type)	X		2	2		2					
	307556	Terminal, eye, 3/16"	X	26	33			33					
	393196	Terminal, eye, 9/32"	X		4	1		1					
	642378	Terminal, side type, 3/8"	X		1	1		1					
	642377	Terminal, slip type	X		7	9		9					
	A-6321	Tip, insulator	X		1	1		1					
		(*) As Required											
GROUP 15-09 - HEADLIGHTS													
	924404	Headlight, left, assembly (6 volt).	X		1	1		1					
	644447	Headlight, left, assembly (6 volt) (Export).	X		1	1		1					
	924405	Headlight, right, assembly (6 volt).	X		1	1		1					
	644448	Headlight, right, assembly (6 volt) (Export).	X		1	1		1					
27- 1	924392	Headlamp, left, assembly (12 volt).	X	X	1	1	1	1	1	1	1	1	1
27- 4	924393	Headlamp, right, assembly (12 volt).	X	X	1	1	1	1	1	1	1	1	1
	GM-163210	Screw, pan hd., No. 10-16 x 3/8", tapping	X	X	8	8		8					
	GM-138479	Lockwasher, No. 10	X	X	8	8		8					
28- 1	649518	Door, headlight (Chrome).	X	X	2	2	2	2	2	2	2	2	2
28- 9	GM-179349	Screw, ov. hd., No. 8-32 x 5/8" (Door to headlight). . .	X	X	2	2		2					
	936647	Gasket, headlight, to fender	X	X	2	2		2		2	2	2	2
28- 7	908688	Housing, left, assembly	X	X	1	1	1	1	1	1	1	1	1
	908682	Housing, right, assembly	X	X	1	1	1	1	1	1	1	1	1
	908375	Housing, left and right, assembly (Export).	X		1	1		1					
	640836	Nut, adjusting, screw.	X		4	4		4					
28- 5	908576	Ring, unit, mounting	X	X	2	2	2	2	2	2	2	2	2

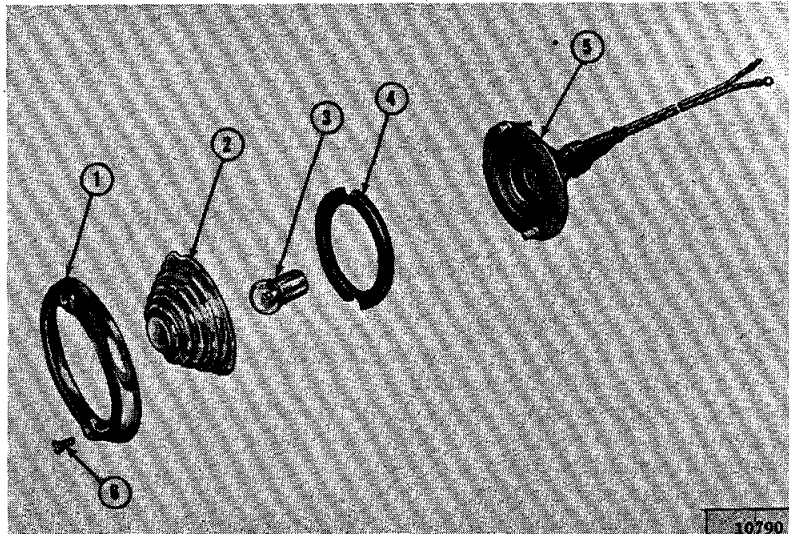


FIG. 29 - PARKING LIGHT (CJ3B) (CJ5) (CJ5A) (CJ6) (CJ6A) (DJ5) (DJ6)

Ref. No.	Part No.	Description	Group No.
1	718140	Bezel	15-09A
2	718138	Lens	15-09A
3	GM-954645	Lamp (bulb)	15-09A
4	718139	Gasket	15-09A
5	916897	Housing and cable, left	15-09A
6	718143	Screw, bezel to housing	15-09A

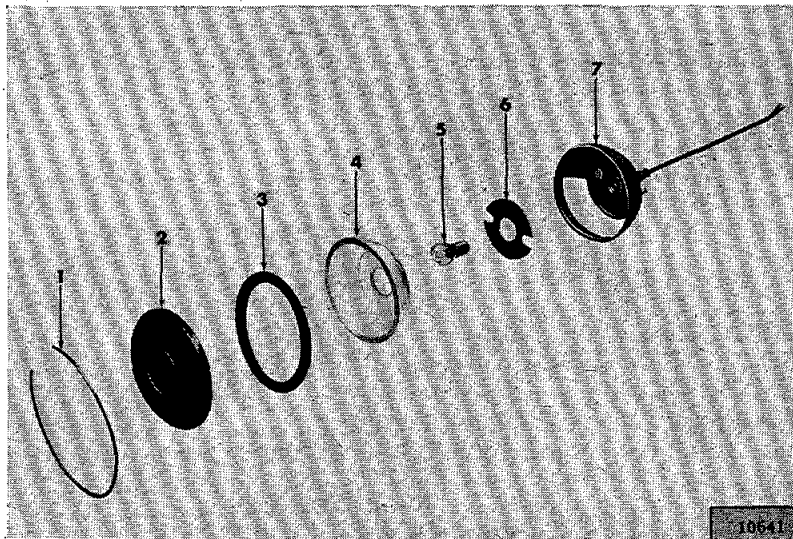


FIG. 30 - TAIL AND STOP LIGHT (CJ3B) (CJ5) (CJ5A) (CJ6) (CJ6A) (DJ5) (DJ6)

Ref. No.	Part No.	Description	Group No.
1	912241	Ring, tail and stop light	15-09B
2	912240	Lens, tail and stop light	15-09B
3	912239	Gasket, license lens	15-09B
4	912238	Retainer, license lens (Glass)	15-09B
5	938247	Lamp (bulb)	15-09B
6	912237	Gasket, housing	15-09B
7	912245	Housing and cable, assembly	15-09B

Fig. and Ref. No.	Part Number	DESCRIPTION	MODELS										
			V 6	4 F	C J 3 B	C J 5	C J 5 A	C J 6	C J 6 A	D J 5	D J 6		
GROUP 15-09 - HEADLIGHTS (Continued)													
28- 3	908578	Ring, unit, retaining (Chrome)	X	X	2	2	2	2	2	2	2	2	2
28- 2	GM-450211	Screw, fil. hd., No. 8-32 x 3/8" Ring to housing.	X	X	6	6	6	6	6	6	6	6	6
29- 6	908577	Screw, adjusting.	X	X	4	4	4	4	4	4	4	4	4
	640835	Screw, adjusting.	X	X	4	4		4					
	924212	Sealed beam unit (6 volt)		X	2	2	2	2	2	2	2	2	2
	924213	Sealed beam unit (6 volt) (Amber)	X	X	2	2	2	2	2	2	2	2	2
28- 9	924214	Sealed beam unit (12 volt)	X	X	2	2	2	2	2	2	2	2	2
	937024	Sealed beam unit (12 volt) (Export)	X	X	2	2	2	2	2	2	2	2	2
	924215	Sealed beam unit (12 volt) (Amber)	X	X	2	2	2	2	2	2	2	2	2
	117116	Spring, headlight, mounting ring (Export).		X	4	4	4	4	4	4	4	4	4
28- 8	642988	Wire, left, assembly (9" long).	X	X	1	1	1	1	1	1	1	1	1
	642989	Wire, right, assembly (54" long).	X	X	1	1	1	1	1				
GROUP 15-09A - PARKING LIGHTS													
Up to Serial No. 57348 - 44200 (C. J. -3B) 57548 - 73568 (C. J. -5) 57748 - 14190 (C. J. -6)													
27- 2	809659	Light, parking and signal, left assembly (6 volt)		X									
	809660	Light, parking and signal, right assembly (6 volt)		X	1	1		1					
	GM-271169	Nut and lockwasher hex. No. 10-32 (Parking light to grills)		X									
	119204	Bezel, (Stainless steel parking lights).		X	2	2		2					
	119205	Gasket, parking light lens		X	2	2		2					
	120058	Housing and cable, parking and signal light, left assembly		X	1	1		1					
	120059	Housing and cable, parking and signal light, right assembly		X	1	1		1					
	GM-142449	Lamp, (bulb) 21-3 C. P. type No. 1158 parking light		X	2	2		2					
	119206	Lens, parking light		X	2	2		2					
After Serial No. 57348 - 44199 57548 - 73567 57748 - 14189													
	916896	Light, parking and signal.		X	1	1		1					
	GM-271169	Nut and lockwasher, hex. #10-32 (Parking light to grill)		X									
29- 1	718140	Bezel (Chrome) parking light.		X	2	2		2					
29- 4	718139	Gasket, parking light, lens		X	2	2		2					
29- 5	916897	Housing and cable, parking and signal light, left assembly		X	1	1		1					
	916898	Housing and cable, parking and signal light, right assembly		X	1	1		1					
	GM-145416	Lamp (bulb) 21-3 C. P. No. 1154 (6 volt).		X	2	2		2					
29- 3	GM-454645	Lamp (bulb) 32-4 C. P. No. 1034 (12 volt).		X	2	2		2					
29- 2	718138	Lens, glass, parking light		X	2	2		2					
29- 6	718143	Screw, rd. hd., No. 6-32 x .250 (Stainless steel). (Light parking signal with Amber Lens)		X	4	4		4					
	938897	Light, parking and signal left and right (12 volt) (Amber).	X	X	2	2	2	2	2	2	2	2	2
	GM-271169	Nut and lockwasher, hex. No. 10-32 (Parking light to grills)	X	X	4	4	4	4	4	4	4	4	4
	934483	Cable assembly (Parking lamp to junction block).	X	X	1	1	1	1	1	1	1	1	1
	931593	Gasket, parking light lens	X	X	2	2	2	2	2	2	2	2	2

Fig. and Ref. No.	Part Number	DESCRIPTION	MODELS											
			V6	4F	CJ3B	CJ5	CJ5A	CJ6A	DJ5	DJ6				
GROUP 15-09A - PARKING LIGHTS (Continued)														
	GM-142303	Lamp, (bulb) 3 C. P. (6 volt)	X	X	1	1	2	1	2	2	2	2	2	2
	928900	Lamp, (bulb) 4 C. P. (12 volt)	X	X	2	2	2	2	2	2	2	2	2	2
	935924	Lens, parking light (Amber)	X	X	2	2	2	2	2	2	2	2	2	2
	937669	Lens, parking light (Clear)	X	X	2	2	2	2	2	2	2	2	2	2
	931594	Ring, lens retaining	X	X	2	2	2	2	2	2	2	2	2	2
GROUP 15-09B - TAIL AND STOP LIGHTS														
27-15	938894	Light, tail and stop, right, assembly (12 volt)	X	X	1	1		1		1	1	1		
27-16	938893	Light, tail and stop, left, assembly (12 volt)	X	X	1	1		1		1	1	1		
	938898	Light, tail and stop (Chrome)						1		1				
	GM-271172	Nut and lockwasher, hex. hd., 1/4"-20. (Light and bracket to body)	X	X	4	4	4	4	4	4	4	4	4	4
30- 6	912237	Gasket, housing	X	X	2	2		2		2	2	2		
30- 3	912239	Gasket, license lens.	X	X	2	2		2		2	2	2		
30- 7	912230	Housing and cable, left, assembly	X	X	1	1		1		1	1	1		
30- 7	912245	Housing and cable, right, assembly	X	X	1	1		1		1	1	1		
	GM-145416	Lamp, (bulb) 6 volt 21-3 C. P. No. 1154	X	X	2	2	2	2	2	2	2	2	2	2
	GM-454645	Lamp, (bulb) (32-4 C. P.) No. 1034	X	X	2	2	2	2	2	2	2	2	2	2
30- 2	938247	Lamp, (bulb) (32-4 C. P.) No. 1157	X	X	2	2	2	2	2	2	2	2	2	2
	912240	Lens, tail and stop light.	X	X	2	2		2		2	2	2		
30- 4	912238	Retainer, license lens (Glass)	X	X	2	2		2		2	2	2		
30- 1	912241	Ring, tail and stop light.	X	X	2	2		2		2	2	2		
	912271	Kit, dual, tail light (Plastic) (6 volt)	X	X	1	1		1		1	1	1		
		Consists of:												
	912261	Cable, tail light, right.				1	1		1		1	1		
	644106	Clip (To rear crossmember).				3	3		3		3	3		
	635985	Connector (3-way)				2	2		2		2	2		
	635981	Connector (2-way)				2	2		2		2	2		
		Drawing, installation												
	912243	Light, tail and stop, right assembly (6 volt)				1	1		1		1	1		
	GM-271172	Nut & lockwasher, hex. hd., 1/4-20				2	2		2		2	2		
GROUP 15-09F - LICENSE PLATE LIGHT														
	958504	Light, license, assembly (Chrome)	X	X				1		1	1	1		
	GM-271169	Nut and lockwasher, hex., No. 10-32 (Light to bracket) . .	X	X				1		1	1	1		
	664458	Bracket, tail light (inner)	X	X				1		1	1	1		
	664456	Bracket, tail light and license plate (Outer)	X	X				1		1	1	1		
	GM-126682	Bolt, carriage, rd. hd., 5/16"-18 x 4" (Bracket to bracket) .	X	X				1		1	1	1		
	GM-120214	Lockwasher, 5/16" (Bracket to bracket)	X	X				1		1	1	1		
	664785	Washer, special, 1/2" I. D. x 13/16" O. D. (Bracket to bracket).	X	X				1		1	1	1		
	664784	Washer, special, 21/64" I. D. x 1" O. D. (Bracket to bracket) .	X	X				2		2	2	2		
	GM-446363	Washer, plain, 5/16" (Bracket to bracket)	X	X				1		1	1	1		
	664482	Spacer, tail light bracket (Bracket to bracket)	X	X				1		1	1	1		
	GM-219282	Nut, wing, 5/16" (Chrome) (Bracket to bracket)	X	X				1		1	1	1		
	GM-160515	Screw, pan. hd., C. R. 1/4"-20 x 1/2" (License and tail light bracket to tail gate)	X	X				2		2	2	2		
	GM-160541	Screw, pan. hd., C. R. 1/4"-20 x 3/4" (License and tail light bracket to tail gate)	X	X				2		2	2	2		

Fig. and Ref. No.	Part Number	DESCRIPTION	MODELS										
			V6	4F	CJ3B	CJ5	CJ5A	CJ6	CJ6A	DJ5	DJ6		
GROUP 15-09F - LICENSE PLATE LIGHT (Continued)													
	GM-120392	Washer, plain (License and tail light bracket to tail gate)	X	X			4		4	4	4		
	911917	Spacer (License and tail light bracket to tail gate)	X	X			2		2	2	2		
	GM-271172	Nut and lockwasher, hex., 1/4"-20 (License and tail light bracket to tail gate)	X	X			4		4	4	4		
Serviceable Components of 958504													
	K-718735	Cable, and socket, license light	X	X			1		1	1	1		
	GM-142303	Lamp (bulb) 3 C. P. (6 volt)	X	X			1		1	1	1		
	938900	Lamp (bulb) 4 C. P. (12 volt) #1155 Heavy duty	X	X			1		1	1	1		
	K-718589	Lens, license light.	X	X			1		1	1	1		
	GM-120614	Nut mounting, stud #10-32	X	X			2		2	2	2		
	K-718591	Plate, socket retainer.	X	X			1		1	1	1		
Use with Rear mounted spare tire and bumperettes													
	948288	Light, license plate, assembly (Black)	X	X			1		1		1	1	
	GM-453019	Screw and lockwasher. (Lamp to tailgate)	X	X			4		4		4	4	
	943108	Stud ball	X	X			1		1		1	1	
	GM-138489	Lockwasher, 3/8"	X	X			1		1		1	1	
	GM-124925	Nut, 3/8"-24	X	X			1		1		1	1	
Serviceable Components of 948288 License Light													
	943105	Bracket, mounting license plate, assembly	X	X			1		1		1	1	
	948293	Bracket, mounting, left	X	X			1		1		1	1	
	948292	Bracket, mounting, right	X	X			1		1		1	1	
	948289	Housing and bracket, license lamp.	X	X			1		1		1	1	
	938900	Lamp, (bulb) #1155	X	X			1		1		1	1	
	943104	Lens	X	X			1		1		1	1	
GROUP 15-09G - DIRECTIONAL SIGNAL LIGHTS													
	916771	Bracket, mounting directional signal switch.	X	X	1	1	1	1	1	1	1	1	1
	916772	Clamp, bracket mounting signal switch	X	X	1	1	1	1	1	1	1	1	1
	909296	Clamp, harness directional signal switch	X	X	1	1	1	1	1	1	1	1	1
	GM-454787	Screw, #10-32 x 1/2" (Clamp to housing)	X	X	2	2	2	2	2	2	2	2	2
27-25	938899	Flasher, (Plug-in-type) (12 volt)	X	X	1	1	1	1	1	1	1	1	1
	GM-271166	Nut and lockwasher, #10-24 (Flasher to instrument panel)	X	X	1	1	1	1	1	1	1	1	1
	GM-131282	Lamp, (bulb) #53 (12 volt)	X	X	1	1	1	1	1	1	1	1	1
	909301	Spring. (Signal switch cable to steering column)	X	X	1	1	1	1	1	1	1	1	1
27-20	916807	Switch directional signal, assembly	X	X	1	1	1	1	1	1	1	1	1
	GM-216277	Screw, 1/4"-20 x 1/2"	X	X	2	2	2	2	2	2	2	2	2

Fig. and Ref. No.	Part Number	DESCRIPTION	MODELS											
			V6	4F	CJ3B	CJ5	CJ5A	CJ6	CJ6A	DJ5	DJ6			
		GROUP 15-09G - DIRECTIONAL SIGNAL LIGHTS (Continued)												
		4-Way Flasher												
	936026	Kit, 4-Way Flasher	X	X	1	1	1	1	1	1	1	1	1	1
		Consists of:												
	935985	4 Connector (3-way)												
	956222	1 Decal												
	935869	1 Flasher												
		1 Installation, instructions												
	935536	1 Switch and harness												
	642377	1 Terminal slip												
		Serviceable Components of 936026												
	GM-131282	Lamp (bulb) #53 (C. P.) (12 volt)	X	X	1	1	1	1	1	1	1	1	1	1
	943763	Knob	X	X	1	1	1	1	1	1	1	1	1	1
	942488	Nut, hex., 5/8"-18	X	X	1	1	1	1	1	1	1	1	1	1
		Four way Flasher Switch mounted in Instrument Panel												
	635981	Connector (2-way)	X	X	1	1	1	1	1	1	1	1	1	1
	635985	Connector (3-way)	X	X	1	1	1	1	1	1	1	1	1	1
	947309	Cable, flasher to connector	X	X	1	1	1	1	1	1	1	1	1	1
	947308	Cable, light switch to flasher	X	X	1	1	1	1	1	1	1	1	1	1
	956493	Flasher, (12 volt) (3 Prong) (Tung sol #550)	X	X	1	1	1	1	1	1	1	1	1	1
	947179	Flasher, (12 volt) (2 Prong) (Tung sol #552)	X	X	1	1	1	1	1	1	1	1	1	1
	928426	Harness, four-way flasher switch	X	X	1	1	1	1	1	1	1	1	1	1
	954692	Knob and set screw (Black)	X	X	1	1	1	1	1	1	1	1	1	1
	928435	Switch, four-way flasher	X	X	1	1	1	1	1	1	1	1	1	1
	921315	Nut, 1/2"-20.	X	X	2	2	2	2	2	2	2	2	2	2
		(Switch mounting)												
		GROUP 15-09L - BRAKE WARNING LIGHT												
	948124	Kit, warning light, split brake system	X	X	1	1	1	1	1	1	1	1	1	1
		Consists of:												
	946482	1 Cable, ignition switch to connector												
	946438	1 Cable, valve to connector												
	635985	1 Connector (2 way)												
	GM-127934	1 Bulb #57 (12 volt)												
	934064	1 Light, warning, brake, assembly												
	946198	1 Valve, brake warning light assembly												
		1 Installation, instructions												
	947119	Cable, valve to connector (RHD)	X	X	1	1	1	1	1	1	1	1	1	1
	635981	Connector (2-way) (RHD)	X	X	1	1	1	1	1	1	1	1	1	1
	947078	Kit, switch repair, warning light	X	X	1	1	1	1	1	1	1	1	1	1
		GROUP 15-11 - INSTRUMENT PANEL LIGHTS												
	637749	Insulator, contact tip	X	X	5	5	5	5	5	5	5	5	5	5
	GM-131282	Lamp, (bulb) 1 C. P. (12 volts)	X	X	2	2	2	2	2	2	2	2	2	2
32- 3	GM-127934	Lamp, (bulb) 2 C. P. instruments (12 volts)	X	X	3	3	3	3	3	3	3	3	3	3
	800926	Socket, tell-tale lights	X	X	3	3	3	3	3	3	3	3	3	3

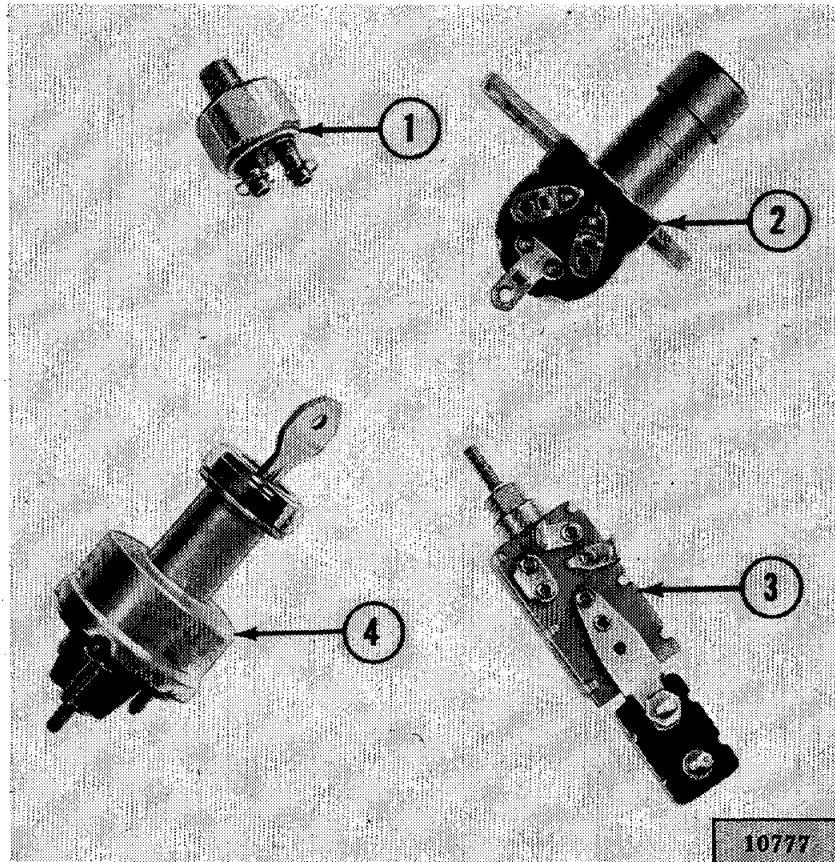
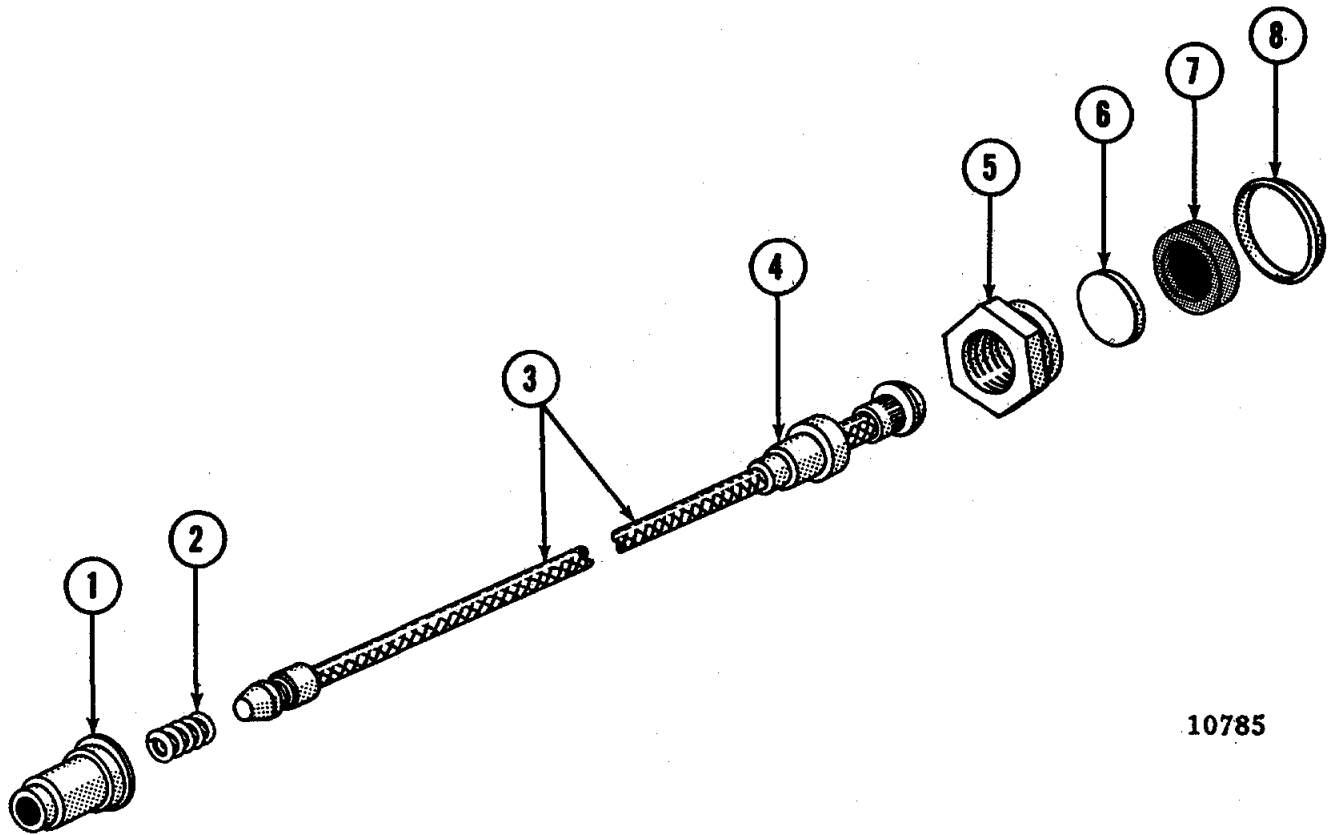


FIG. 31 - SWITCHES (CJ3B) (CJ5) (CJ6) (CJ5A) (CJ6A) (DJ5) (DJ6)

Ref. No.	Part No.	Description	Group No.
1	647801	Switch, stop light	15-14
2	803870	Switch, headlight foot dimmer	15-12
3	924788	Switch, lighting	15-12A
4	923711	Switch, ignition and starter	15-13A

Fig. and Ref. No.	Part Number	DESCRIPTION	MODELS										
			V6	4F	CJ3B	CJ5	CJ5A	CJ6	CJ6A	DJ5	DJ6		
GROUP 15-11 - INSTRUMENT PANEL LIGHTS (Continued)													
	911688	Socket, instrument, lamp	X	X	2	2	2	2	2	2	2	2	2
	636729	Spring, contact tip.	X	X	5	5	5	5	5	5	5	5	5
	635476	Terminal, contact	X	X	5	5	5	5	5	5	5	5	5
GROUP 15-12 - FOOT DIMMER SWITCH													
80-25	803870	Switch, headlight foot dimmer		X	1								
27-24	811681	Switch, headlight foot dimmer	X	X		1	1	1	1	1	1	1	1
	GM-191985	Screw and lockwasher, pan hd., 1/4"-20 x 1/2"	X	X	2	2	2	2	2	2	2	2	2
	808366	Screw and lockwasher, pan hd., No. 8-32 x 1/4"	X	X	3	3	3	3	3	3	3	3	3
GROUP 15-12A - LIGHTING SWITCH													
31- 3	924788	Switch, lighting assembly, complete (6 and - 12 volt) . . .	X	X	1	1	1	1	1	1	1	1	1
27-21	924789	Switch, lighting and circuit breaker, assembly (6 and 12 volt).	X	X	1	1	1	1	1	1	1	1	1
	53695	Nut, hex., 7/16"-28	X	X	1	1	1	1	1	1	1	1	1
	GM-131718	Lockwasher 7/16" (Mounting switch to instrument panel) .	X	X	1	1	1	1	1	1	1	1	1
	921293	Breaker, circuit, light, switch, assembly (6 and 12 volt) .	X	X	1	1		1					
	GM-271169	Nut and lockwasher, #10-32 (Terminal nut)	X	X	2	2	2	2	2	2	2	2	2
	906798	Knob, with set screw, light switch assembly	X	X	1	1	1	1	1	1	1	1	1
	808366	Screw and lockwasher pan hd., #8-32 x 1/4" (Terminals) .	X	X	3	3	3	3	3	3	3	3	3
GROUP 15-13A - IGNITION SWITCH													
27-18	924918	Switch, ignition and starter, assembly (W/lock and two keys) .	X	X	1	1	1	1	1	1	1	1	1
31- 4	923711	Switch, ignition and starter, assembly (W/O lock cylinder and keys)	X	X	1	1	1	1	1	1	1	1	1
	807749	Bezel, ignition and starterswitch (For 915769)	X	X	1	1	1	1	1	1	1	1	1
	960583	Cylinder, ignition lock, assembly (W/two keys)	X	X	1	1	1	1	1	1	1	1	1
	960338	Key, ignition switch, (Give key number when ordering) . . .	X	X	1	1	1	1	1	1	1	1	1
	923709	Nut, mounting, ignition switch	X	X	1	1	1	1	1	1	1	1	1
	807743	Spring, ignition and starter switch (For 915769)	X	X	1	1	1	1	1	1	1	1	1
GROUP 15-14 - STOP LIGHT SWITCH													
27-23	647801	Switch, stop light, assembly (Push type)	X	X	1	1	1	1	1	1	1	1	1
	931216	Switch, stop light, assembly (Clip type)	X	X	2	2	2	2	2	2	2	2	2
GROUP 15-17 - HORN AND BRACKET													
	926596	Horn and bracket, assembly (6 volt) (Sparton) (Spade type terminals)		X	1	1		1					
27-32	926595	Horn and bracket, assembly (12 volt) (Auto-lite) (Spade type terminals)	X	X	1	1	1	1	1	1	1	1	1
	925088	Bracket, horn assembly	X	X	1	1	1	1	1	1	1	1	1
	GM-271175	Nut and lockwasher (Horn to bracket)	X	X	1	1	1	1	1	1	1	1	1



10785

FIG. 32 - HORN BUTTON (CJ3B) (CJ5) (CJ6) (DJ3A)

Ref. No.	Part No.	Description	Group No.
1	638885	Cup	15-17A
2	638884	Spring	15-17A
3	938423	Cable (Includes ferrule)	15-17A
4	938422	Ferrule	15-17A
5	801425	Nut	15-17A
6	801427	Cap	15-17A
7	927416	Button, horn	15-17A
8	809173	Retainer, horn button	15-17A

Fig. and Ref. No.	Part Number	DESCRIPTION	MODELS											
			V6	4F	CJ3B	CJ5	CJ5A	CJ6	CJ6A	DJ5	DJ6			
GROUP 15-17A - HORN BUTTON														
27-19	927416	Button, horn	X	X	1	1	1	1	1	1	1	1	1	1
27-29	938423	Cable, horn	X	X	1	1	1	1	1	1	1	1	1	1
32- 1	638885	Cup, horn button spring.	X	X	1	1	1	1	1	1	1	1	1	1
	927413	Cup, contact, horn button.	X	X	1	1	1	1	1	1	1	1	1	1
	930673	Disc, contact, horn button.	X	X	1	1	1	1	1	1	1	1	1	1
32- 4	938422	Ferrule, insulating, horn, cable.	X	X	1	1	1	1	1	1	1	1	1	1
	802359	Kit, button, horn (Waterproof)	X	X	1	1	1	1	1	1	1	1	1	1
		Consists of:												
	928805	Cap, horn button (For wheel W/1-1/4" button).				1	1		1					
32- 6	801427	Cap, horn button control.				1	1		1					
32- 5	801425	Nut, wheel and horn button				1	1		1					
32- 8	809173	Retainer, horn button cap (For 1-1/4" button)	X	X	1	1	1	1	1	1	1	1	1	1
	927414	Retainer, horn button (For 2-3/8" button)	X	X	1	1	1	1	1	1	1	1	1	1
32- 2	638884	Spring, horn button	X	X	1	1	1	1	1	1	1	1	1	1
GROUP 15-18 - BATTERY SUPPORT														
	970428	Tray, battery, assembly	X			1	1	1	1	1	1	1	1	1
	GM-423561	Bolt and lockwasher, 5/16"-18 x 7/8"	X			3	3	3	3	3	3	3	3	3
	GM-120393	Washer, 5/16" (Battery tray to dash panel)	X			3	3	3	3	3	3	3	3	3
	916878	Bolt, battery clamp.	X			2	2	2	2	2	2	2	2	2
	GM-120214	Lockwasher, 5/16"	X	X		2	2	2	2	2	2	2	2	2
	A-11775	Washer, plain	X	X		2	2	2	2	2	2	2	2	2
	GM-148313	Nut, wing, 5/16"-18.	X	X		2	2	2	2	2	2	2	2	2
	919824	Bracket, battery hold down.	X	X		1	1	1	1	1	1	1	1	1
	970431	Brace, battery, left.	X			1	1	1	1	1	1	1	1	1
	970432	Brace, battery, right	X			1	1	1	1	1	1	1	1	1
	GM-122007	Bolt, 5/16"-18 x 3/4"	X			1	1	1	1	1	1	1	1	1
	GM-271184	Nut and lockwasher, 5/16"-18	X			1	1	1	1	1	1	1	1	1
	GM-120393	Washer, 5/16" (Brace to body hold down).	X			1	1	1	1	1	1	1	1	1
	GM-271184	Nut and lockwasher, 5/16"-18	X			1	1	1	1	1	1	1	1	1
	GM-120393	Washer, 5/16" (Brace to battery tray stud).	X			1	1	1	1	1	1	1	1	1
	GM-122007	Bolt, 5/16"-18 x 3/4"	X			1	1	1	1	1	1	1	1	1
	GM-271184	Nut and lockwasher, 5/16"-18	X			1	1	1	1	1	1	1	1	1
	GM-120393	Washer, 5/16" (Brace to battery tray)	X			2	2	2	2	2	2	2	2	2
	919824	Bracket, battery hold down, assembly (12 volt)	X	X	1	1	1	1	1	1	1	1	1	1
	972419	Bracket, battery hold down to dash panel.	X			1	1	1	1	1	1	1	1	1
	GM-423561	Bolt and lockwasher 5/16"-18 x 7/8" (Battery hold down stabilizer bracket to dash)	X			1	1	1	1	1	1	1	1	1
GROUP 15-18A - BATTERY CABLES														
	A-9093	Bolt and nut terminal clamp	X	X		1	1	1	1	1	1	1	1	1
	919808	Cable, battery groun assembly, complete (28-1/2") (6 volt)	X	X	1	1	1	1	1	1	1	1	1	1
	GM-120758	Bolt, hex. hd., 3/8"-24 x 7/8"	X	X	1	1	1	1	1	1	1	1	1	1
	GM-178551	Lockwasher, 3/8"	X	X	1	1	1	1	1	1	1	1	1	1
	GM-120369	Nut, hex. hd., 3/8"-24 (Cable to frame)	X	X	1	1	1	1	1	1	1	1	1	1
27- 5	919345	Cable, battery, ground assembly complete (13.38") (12 volt)	X	X	1	1		1						
	941816	Cable, battery ground assembly	X	X		1	1	1	1	1	1	1	1	1
	GM-120213	Bolt, 5/16"	X	X		1	1	1	1	1	1	1	1	1
	GM-178532	Lockwasher, 5/16"	X	X		2	2	2	2	2	2	2	2	2