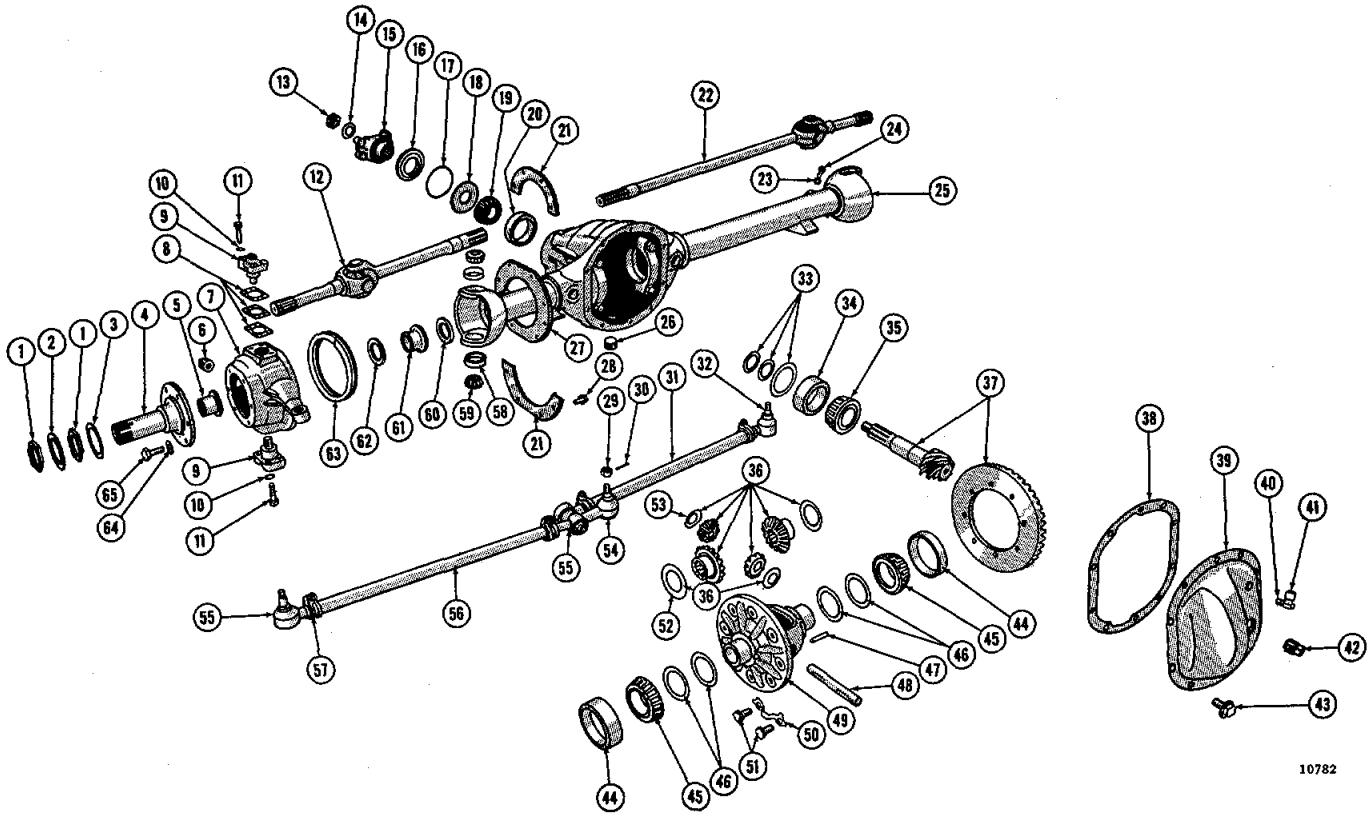




Fig. and Ref. No.	Part Number	DESCRIPTION	MODELS									
			V6	4F	CJ3B	CJ5	CJ5A	CJ6	CJ6A	DJ5	DJ6	
<b>GROUP 20-01 - FRONT AXLE</b>												
44-	925558	Axle, front, assembly L. H. D. (4.27 to 1) (Model 25) . . . .	X	1	1			1				
	931530	Axle, front, assembly R. H. D. (4.27 to 1) (Model 25) . . . .	X	1	1			1				
	916806	Axle, front, assembly L. H. D. (5.38 to 1) (Model 25) . . . . (Above axles use U. Joint end yoke assembly A-1445)	X	1	1			1				
44-	941852	Axle, front, assembly L. H. D. (3.73 to 1) (Model 27) . . . .	X	X		1	1	1	1			
	937436	Axle, front, assembly L. H. D. (4.27 to 1) (Model 27) . . . .	X	1		1	1	1	1			
	937443	Axle, front, assembly L. H. D. (4.27 to 1) (Model 27) (Powr-Lok) . . . . .	X	1		1	1	1	1			
	937437	Axle, front, assembly R. H. D. (4.27 to 1) (Model 27) . . . .	X	1		1	1	1	1			
	941052	Axle, front, assembly L. H. D. (4.88 to 1) (Model 27) . . . .	X	X		1	1	1	1			
	937432	Axle, front, assembly L. H. D. (5.38 to 1) (Model 27) . . . .	X	1		1	1	1	1			
	937440	Axle, front, assembly L. H. D. (5.38 to 1) (Model 27) (Powr-Lok) . . . . .	X	1		1	1	1	1			
	937433	Axle, front, assembly R. H. D. (5.38 to 1) (Model 27) . . . . (Above axles use U. Joint end yoke assembly 936216)	X	1		1	1	1	1			
45-15	812241	Axle, front ("I" Beam) . . . . .	X	X							1	1
	943566	Axle, front, assembly (L. H. D.) . . . . .	X	X							1	1
<b>GROUP 20-02 - HOUSING - FRONT AXLE</b>												
		NOTE 1: Up to Serial No. 57348-35326 (CJ-3B) 57548-48284 (CJ-5) 57748-12497 (CJ-6)										
		NOTE 2: After Serial No. 57348-35325 (CJ-3B) 57548-48286 (CJ-5) 57748-12496 (CJ-6) Up to Serial No. 57348-48092 (CJ-3B) 57548-83072 (CJ-5) 57748-15006 (CJ-6)										
		NOTE 3: After Serial No. 57348-48091 (CJ-3B) 57548-83072 (CJ-5) 57748-15005 (CJ-6) Up to Serial No. 57348-69427 (CJ-3B) 57548-121248 (CJ-5) 57748-19315 (CJ-6)										
		NOTE 4: After Serial No. 57348-69426 (CJ-3B) 57548-121247 (CJ-5) 57748-19314 (CJ-6)* Up to Serial No. 57348-75400 (CJ-3B)* 57548-127473 (CJ-5)* 57748-20035 (CJ-6)*										
		NOTE 5: After Serial No. 57348-75399 (CJ-3B)* 57548-127472 (CJ-5) 57748-20034 (CJ-6) Up to Serial No. 57348-102391 (CJ-3B) 57548-156324 (CJ-5) 57748-24380 (CJ-6)										
		NOTE 6: After Serial No. 57348-102390 (CJ-3B)† 57548-156323 (CJ-5)† 57748-24379 (CJ-6)†										
		* Breaking points of models with 4-F engine † 4-F and V-6 Engines										



10782

FIG. 44 - FRONT AXLE - FULL FLOATING (CJ3B) (CJ5) (CJ5A) (CJ6) (CJ6A)

Ref. No.	Part No.	Description	Group No.
1	A-866	Nut, retaining, wheel bearings	25-03
2	A-867	Lockwasher, wheel bearing nut	25-03
3	A-865	Lockwasher, wheel bearing	25-03
4	649782	Spindle and bushing	20-06
5	649783	Bushing, wheel bearing spindle	20-06
6	GM-444588	Plug, filler, steering knuckle	20-06
7	805784	Knuckle and arm, right	20-06
8	A-6882	Shim set, king pin bearing	20-07
9	910901	Cap, king pin bearing	20-07
10	GM-120382	Lockwasher, 3/8"	20-07

FIG. 44 - FRONT AXLE - FULL FLOATING (CJ3B) (CJ5) (CJ5A) (CJ6) (CJ6A)

Ref. No.	Part No.	Description	Group No.
11	GM-120677	Bolt, hex. hd., 3/8"-24 x 1-1/2"	20-07
12	909460	Kit, shaft and universal joint, right	20-05
13	801367	Nut, hex., 3/4"-16 huglock	20-04
14	636570	Washer, drive pinion nut	20-04
15	A-1445	Yoke, end	20-04
16	639265	Oil seal, pinion	20-04
17	636565	Gasket, pinion oil seal	20-04
18	926802	Slinger, oil, drive pinion	20-04
19	52878	Cone and rollers, pinion bearing, outer	20-04
20	52879	Cup, pinion bearing, outer	20-04
21	908006	Plate, seal retainer	20-06
22	800611	Kit, shaft and universal joint, left	20-05
23	GM-124925	Nut, 3/8"-24	20-06
24	A-821	Bolt, stop, steering	20-06
25	962267	Housing, front axle	20-02
26	636577	Plug, drain	20-02
27	908005	Oil seal, felt	20-06
28	802498	Screw and lockwasher, hex. hd., 5/16"-24 x 11/16"	20-06
29	GM-125250	Nut, hex., 1/2"-20	23-01
30	GM-137168	Pin, cotter	23-01
31	642058	Rod, tie steering, left	23-01
32	642059	Socket, tie rod, left	23-01
33	649228	Shim set, axle drive pinion	20-04
34	52877	Cup, pinion bearing, inner	20-04
35	807266	Cone and rollers, pinion bearing, inner	20-04
36	926544	Kit, repair, differential gears	20-03
37	934894	Kit, axle drive gear and pinion	20-03
38	929874	Gasket, axle housing cover	20-02
39	A-10231	Cover, front axle housing	20-02
40	809656	Elbow, 1/8"	20-02
41	A-870	Breather	20-02
42	GM-103869	Plug, filler	20-02
43	GM-9409097	Screw and lockwasher, 5/16"-18 x 5/8"	20-02
44	52881	Cup, differential bearing	20-03
45	52882	Cone and rollers, differential bearing	20-03
46	648061	Shim set, adjusting, differential	20-03
47	636360	Pin, lock, mate shaft	20-03
48	A-798	Shaft, pinion mate	20-03
49	A-793	Case, differential	20-03
50	933892	Strap, lock	20-03
51	917292	Screw, drive gear	20-03
52	A-795	Washer, thrust, side gear	20-03
53	A-797	Washer, thrust, pinion mate	20-03
54	640178	Socket, tie rod, left, assembly (For right tie rod)	23-01
55	921317	Socket, tie rod, right	23-01
56	642057	Rod, tie, steering, right, assembly	23-01
57	A-837	Clamp, tie rod	23-01
58	910901	Cup, king pin bearing	20-07
59	52940	Cone and rollers, king pin bearing	20-07
60	A-979	Oil seal, front axle shaft, inner	20-05
61	A-6439	Guide, front axle shaft	20-05
62	649769	Washer, thrust axle shaft	20-05
63	909854	Oil seal, rubber and backing ring	20-06
64	GM-120382	Lockwasher, 3/8"	24-02
65	910219	Bolt, hex. hd., 3/8"-24 x 7/8"	24-02

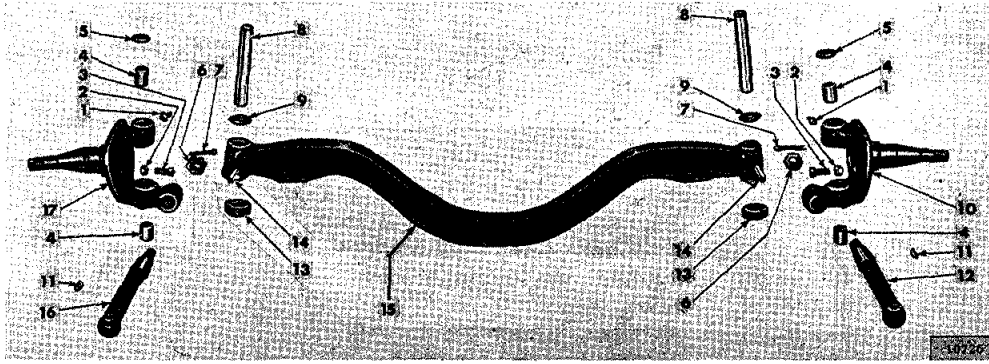


FIG. 45 - FRONT AXLE (DJ5) (CJ6)

Ref. No.	Part No.	Description	Group No.	Ref. No.	Part No.	Description	Group No.
1	GM-191758	Fitting, lubrication	20-06	10	812222	Knuckle, steering, left	20-06
2	664433	Nut, hex., 3/8"-16	20-06	11	GM-124549	Key, steering arm	20-06
3	GM-179840	Bolt, hex. hd., 3/8"-16 x 1-1/8"	20-06	12	812203	Arm, steering, LH	20-06
4	647567	Bushing, steering knuckle	20-06	13	643778	Bearing, thrust steering knuckle	20-06
5	GM-117920	Plug, expansion	20-06	14	643784	Key, draw, steering knuckle	20-06
6	643782	Nut, steering arm	20-06	15	812241	Axle, front (I Beam Type)	20-06
7	GM-137204	Pin, cotter	20-06	16	812204	Arm, steering, RH	20-06
8	647568	Pin, steering knuckle	20-06	17	812223	Knuckle, steering, right	20-06
9	805459	Shim set	20-06				

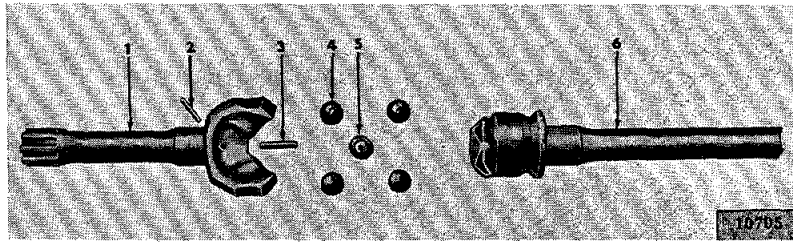


FIG. 46 - FRONT AXLE UNIVERSAL JOINT (BENDIX) (CJ3B) (CJ5) (CJ5A) (CJ6) (CJ6A)

Ref. No.	Part No.	Description	Group No.	Ref. No.	Part No.	Description	Group No.
1	800611	Shaft, outer (See Kit)	20-05	4	A-6289	Ball, universal joint	20-05
2	A-6278	Pin, groove	20-05	5	A-6283	Ball, center	20-05
3	A-6279	Pin, center all	20-05	6	(See Kit)	Shaft, inner	20-05

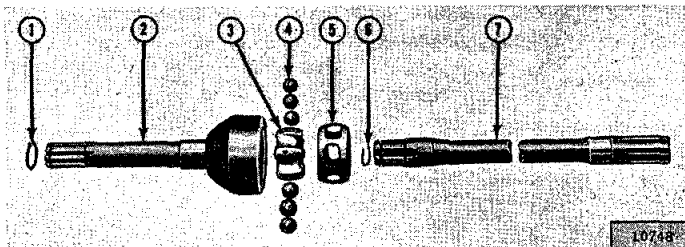
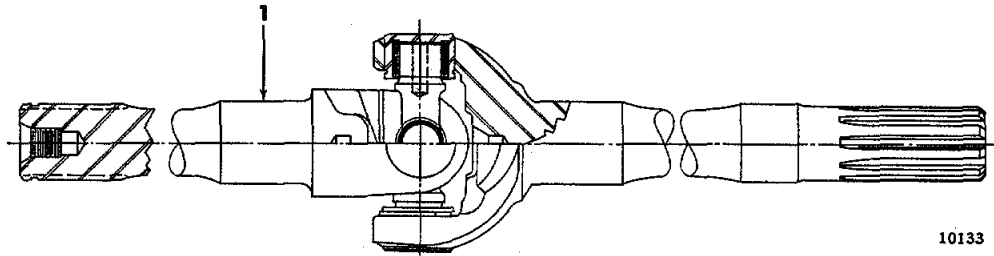


FIG. 47 - FRONT AXLE UNIVERSAL JOINT (RZEPPA) (CJ3B) (CJ5) (CJ5A) (CJ6) (CJ6A)

Ref. No.	Part No.	Description	Group No.	Ref. No.	Part No.	Description	Group No.
1	649778	Snap ring	20-05	5	A-1719	Cage	20-05
2	(See Kit)	Shaft, outer	20-05	6	810095	Ring, retaining	20-05
3	802314	Race, inner	20-05	7	810087	Shaft, inner	20-05
4	A-1721	Ball, universal joint	20-05				



10133

FIG. 48 - FRONT AXLE UNIVERSAL JOINT (SPICER) (CJ3B) (CJ5) (CJ5A) (CJ6) (CJ6A)

Ref. No.	Part No.	Description	Group No.
1	909459	Kit, universal joint	20-05

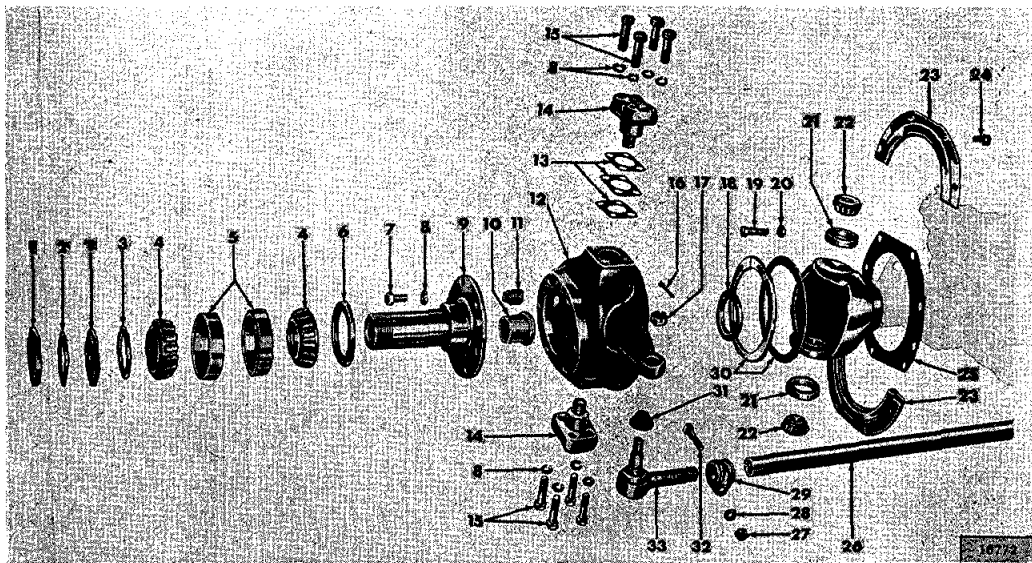


FIG. 49 - STEERING KNUCKLE AND WHEEL BEARINGS (CJ3B) (CJ5) (CJ5A) (CJ6) (CJ6A)

Ref. No.	Part No.	Description	Group No.	Ref. No.	Part No.	Description	Group No.
1	A-866	Nut, retaining, wheel bearings	25-03	19	A-821	Bolt, stop, steering	20-06
2	A-867	Lockwasher, wheel bearing nut	25-03	20	GM-124925	Nut, 3/8"-24	20-06
3	A-865	Lockwasher, wheel bearing	25-03	21	52941	Cup, king pin bearing	20-07
4	925446	Cone and rollers	25-03	22	52940	Cone and rollers, king pin bearing	20-07
5	52943	Cup, front wheel bearing	25-03	23	908006	Plate, seal retainer	20-06
6	805150	Oil seal, front hub	25-03	24	802498	Screw and lockwasher, hex. hd., 5/16"-24 x 11/16"	20-06
7	742010	Bolt, hex. hd., 3/8"-24 x 7/8"	24-02	25	908005	Oil Seal, felt	20-06
8	GM-120382	Lockwasher, 3/8"	24-02	26	642059	Rod, tie, steering, right	23-01
9	649782	Spindle and bushing, wheel bearing	20-06	27	GM-120368	Nut, hex., 5/16"-24	23-01
10	649783	Bushing, wheel bearing spindle	20-06	28	GM-120638	Lockwasher, 5/16"	23-01
11	GM-444588	Plug, filler, steering knuckle	20-06	29	A-837	Clamp, tie rod	23-01
12	805784	Knuckle and arm, right	20-06	30	909854	Oil seal, rubber and backing ring, assembly	20-06
13	A-6882	Shim set, king pin bearing	20-07	31	645134	Cover, dust tie rod socket (Rubber)	23-01
14	910901	Cap, king pin bearing	20-07	32	645218	Bolt, hex. hd., 5/16"-24 x 1-3/8"	23-01
15	GM-120677	Bolt, hex. hd., 3/8"-24 x 1-1/2"	20-07	33	921317	Socket, tie rod, right	23-01
16	GM-137168	Pin, cotter, 3/32" x 7/8" (Tie rod)	23-01				
17	GM-125650	Nut, hex., 1/2"-20	23-01				
18	649769	Washer, thrust, axle shaft	20-06				

Fig. and Ref. No.	Part Number	DESCRIPTION	MODELS										
			V6	4F	CJ3B	CJ5	CJ5A	CJ6	CJ6A	DJ5	DJ6		
GROUP 20-02 - HOUSING - FRONT AXLE (Continued)													
44-25	942267	Housing, front axle, assembly (Model 27 Axle) . . . . .	X			1	1	1	1				
	802300	Housing, front axle, assembly (See Note 1) (Model 25 axle).	X	1	1	1	1	1					
	912005	Housing, front axle, assembly (See Note 2) (Model 25 axle).	X	1	1	1	1	1					
	921173	Housing, front axle, assembly (See Note 3 & 5) (Model 25 axle).	X	1	1	1	1	1					
	926796	Housing, front axle, assembly (See Note 4) (Model 27 axle) (For axle 924986 and 924984) . . . . .	X	1	1	1	1	1					
44-25	933005	Housing, front axle, assembly (See Note 6) (Model 27AF axle) .	X	1	1	1	1	1	1				
	GM-179890	Bolt, hex. hd., 1/2"-13 x 2-1/4" (Diff. bearing cap) (Model 25 axle) . . . . .		*	4	4	4	4					
	926798	Bolt, hex. hd., (Diff. bearing cap) (Model 27 axle) . . . . .	X	X	4	4	4	4	4				
	941045	Bracket, torque reaction . . . . .	X			1	1	1	1				
44-41	A-870	Breather, axle housing, assembly . . . . .	X	X	1	1	1	1	1				
	940316	Bumper, axle . . . . .	X			1	1	1	1		1		
	940304	Spacer, axle, bumper . . . . .	X			1	1	1	1		1		
	GM-271184	Nut and lockwasher, hex., 5/16"-18 . . . . . (Bumper to bracket)	X			1	1	1	1		1		
44-39	A-10231	Cover, front axle housing (See Note 1) (Model 25 axle) . .	X	1	1	1	1	1					
	909304	Cover, front axle housing (See Note 2, 3 & 5) (Model 25 axle) . .	X	1	1	1	1	1					
	641380	Cover, front axle housing (See Note 4 and 5) (Model 27 axle) . .	X	1	1	1	1	1					
	942262	Cover, front axle housing (Model 27 axle) . .	X			1	1	1	1				
44-43	GM-9409097	Screw, and lockwasher, 5/16"-18 x 5/8" . . . . . (Cover to housing)	X	X	10	10	10	10	10	10	10	10	10
44-38	929874	Gasket, axle housing cover . . . . .	X	1	1	1	1	1	1				
	942268	Gasket, axle housing cover . . . . .	X			1	1	1	1				
44-26	636577	Plug, drain, front axle housing . . . . .	X	X	1	1	1	1	1				
44-42	GM-103869	Plug, filler, front axle housing . . . . .	X	X	1	1	1	1	1				
GROUP 20-03 - DIFFERENTIAL - FRONT AXLE													
NOTE: Model 27 axle used beginning with 4F Engines.													
Serial No. 57348-69427 (CJ-3B) 57548-121248 (CJ-5) 57748-19315 (CJ-6)													
Model 27 Front axles used in V6 engine vehicles.													
	910059	Differential, assembly, complete (4.27 to 1) (Model 25 axle) . .	X	1	1	1	1	1					
	801929	Differential, assembly, complete (5.38 to 1) (Model 25 axle) . .	X	1	1	1	1	1					
	926542	Differential, assembly, complete (5.38 to 1) (Model 27 axle) . .	X	1	1	1	1	1	1				
	934945	Differential, assembly, (Less drive gear and pinion)(Model 27). (Above 2 assemblies for ratios 3.73 to 1 and smaller)	X	X	1	1	1	1	1				
	924139	Differential, assembly, (Less drive gear and pinion) (Model 25) (Powr-Lok) . . . . .	X	1	1	1	1	1					
	934944	Differential, assembly (Less drive gear and pinion)(Model 27). (Model 27) (Powr-Lok) . . . . .	X	X	1	1	1	1	1				
52-	926814	Differential, assembly (Less drive gear and pinion) (Model 27) (Powr-Lok) . . . . . (Above 3 assemblies for ratios 3.92 to 1 and greater)	X	1	1	1	1	1	1				
44-49	A-793	Case, differential (Model 25) (Except Powr-Lok) . . . . .	X	1	1	1	1	1					
	926797	Case, differential (Model 27) (Except Powr-Lok) . . . . . (For 3.92 to 1 ratio and greater)	X	1	1	1	1	1	1				

Fig. and Ref. No.	Part Number	DESCRIPTION	MODELS											
			V 6	4 F	C J 3 B	C J 5	C J 5 A	C J 6	C J 6 A	D J 5	D J 6			
GROUP 20-03 - DIFFERENTIAL - FRONT AXLE (Continued)														
	934934	Case, differential (Model 27) (Except Powr-Lok) . . . . . (For 3.73 to 1 ratio and smaller)	X			1	1	1	1					
44-45	52880	Cone and rollers, differential bearing (Model 25 axle) . . . .		X	2	2		2						
	925446	Cone and rollers, differential bearing (Model 27 axle) . . . .	X	X	2	2	2	2	2	2				
44-44	52881	Cup, differential bearing (Model 25 axle) . . . . .		X	2	2		2						
	926800	Cup, differential bearing (Model 27 axle) . . . . .	X	X	2	2	2	2	2	2				
52- 4	935892	Gear set, differential gears (Powr-Lok) (Model 27 axle) . . . Consists of: 2 Side gears 4 Pinion mate		X	1	1	1	1	1	1				
44-37	934894	Kit, axle drive gear and pinion (3.73 to 1) (Model 27) . . . . Consists of: 1 Set, gear and pinion (41-11 teeth) 4 Lockstrap, drive gear screw	X	X		1	1	1	1	1				
	933892	1 Nut, drive pinion												
	801367	8 Screw, drive gear												
44-37	917292	Kit, axle drive gear and pinion (4.27 to 1) (Model 25 axle) . Consists of: 1 Set, gear and pinion (47-11 teeth) 4 Lockstrap, screw		X	1	1		1						
44-50	933892	8 Screw, drive gear												
44-51	917292	Kit, axle drive gear and pinion (5.38 to 1) (Model 25 axle) . Consists of: 1 Set, gear and pinion (43- 8 teeth) 4 Lockstrap, screw		X	1	1		1						
44-37	801928	8 Screw, drive gear												
44-37	927707	Kit, axle drive gear and pinion (4.27 to 1) (Model 27 axle) . Consists of: 1 Set, gear and pinion (47-11 teeth) 4 Lockstrap, screw		X	1	1	1	1	1	1				
44-13	933892	1 Nut, drive pinion												
	801367	8 Screw, drive gear												
44-37	933901	Kit, axle drive gear and pinion (4.88 to 1) (Model 27 axle) . Consists of: 1 Set, gear and pinion (39- 8 teeth) 4 Lockstrap, drive gear screw	X			1	1	1	1	1				
	933892	1 Nut, drive pinion												
	801367	8 Screw, drive gear												
44-37	936166	Kit, axle drive gear and pinion (5.38 to 1) (Model 27 axle) . Consists of: 1 Set, gear and pinion (43- 8 teeth) 4 Lockstrap, screw		X	1	1	1	1	1	1				
	933892	1 Nut, drive pinion												
	801367	8 Screw, drive gear												
44-36	926544	Kit, repair, differential gears (Except Powr-Lok) (Models 25 and 27) . . . . . Consists of: 2 Gear, side 1 Pin, lock, mate shaft	X	X	1	1	1	1	1	1				
44-47	636360	1 Pin, lock, mate shaft												
44-47	908330	2 Pinion, mate												
44-48	A-798	1 Shaft, pinion mate												

Fig. and Ref. No.	Part Number	DESCRIPTION	MODELS											
			V6	4F	CJ3B	CJ5	CJ5A	CJ6	CJ6A	DJ5	DJ6			
GROUP 20-03 - DIFFERENTIAL - FRONT AXLE (Continued)														
44-53	A-797	2 Washer, thrust, pinion mate												
44-52	A-795	2 Washer, thrust, side gear												
52-3	GM-273936	Pin, axle shaft (Powr-Lok) . . . . .	X		1	1	1	1	1	1				
52-3	923005	Ring, side gear (Powr-Lok) . . . . .	X		2	2	2	2	2	2				
52-2	923009	Screw, differential case (Powr-Lok) . . . . .	X		8	8	8	8	8	8				
52-5	926821	Set, disc and plate, friction (Powr-Lok) . . . . .	X		1	1	1	1	1	1				
52-5	926820	Shaft, pinion (Powr-Lok) . . . . .	X		2	2	2	2	2	2				
	919700	Shim kit, differential side gear (Model 23 & 25 axles) . . . . .	X		1	1		1						
		Consists of:												
		2 Shim, .004" thick												
		2 Shim, .006" thick												
		2 Shim, .008" thick												
44-46	648061	Shim, set, adjusting, differential. . . . .	X	X	1	1	1	1	1	1				
		Consists of:												
		2 Shim, .003" thick												
		2 Shim, .005" thick												
		3 Shim, .010" thick												
		3 Shim, .030" thick												
	923006	Spacer, axle shaft (Powr-Lok) . . . . .	X		2	2	2	2	2	2				
GROUP 20-04 - PINION BEARINGS - FRONT AXLES														
NOTE 1: Model 27 axles used between Serial Numbers														
57348-69427 to 57348-75400 (CJ-3B)														
57548-121248 to 57548-127473 (CJ-5)														
57748-19315 to 57748-20035 (CJ-6)														
NOTE 2: Model 27A axles used after Serial Numbers														
57348-102390 (CJ-3B)														
57548-156324 (CJ-5)														
57748-24380 (CJ-6)														
44-35	807266	Cone and rollers, pinion bearing, front (Model 25 axle) . . .	X		1	1		1						
44-35	926803	Cone and rollers, pinion bearing, front (Model 27 axle) . . .	X	X	1	1	1	1	1	1				
44-19	52878	Cone and rollers, pinion bearing, rear (Model 25 and 27 axle)	X	X	1	1	1	1	1	1				
44-34	52877	Cup, pinion bearing, front (Model 25 axle) . . . . .	X		1	1		1						
44-34	926805	Cup, pinion bearing, front (Model 27 axle) . . . . .	X	X	1	1	1	1	1	1				
44-20	52879	Cup, pinion bearing, rear (Model 25 and 27 axle) . . . . .	X	X	1	1	1	1	1	1				
44-17	636565	Gasket, pinion oil seal. . . . .	X	X	1	1	1	1	1	1				
44-13	801367	Nut, hex., 3/4"-16, huglock. . . . .	X	X	1	1	1	1	1	1				
44-16	639265	Oil Seal, pinion. . . . .	X	X	1	1	1	1	1	1				
	636568	Shield, dust, universal joint yoke. . . . .	X	X	1	1	1	1	1	1				
44-33	649228	Shim set, adjusting, pinion bearings, front and rear (Model 25 axle) . . . . .		X	1	1		1						
44-33	929408	Shim set, adjusting, pinion bearings, front and rear (Model 27 axle) . . . . .	X	X	1	1	1	1	1	1				
		Consists of:												
		4 Shim, .003" thick												
		4 Shim, .005" thick												
		4 Shim, .010" thick												
		1 Shim, .030" thick												

Fig. and Ref. No.	Part Number	DESCRIPTION	MODELS									
			V6	4F	CJ3B	CJ5	CJ5A	CJ6A	DJ5	DJ6		
<b>GROUP 20-04 - PINION BEARINGS - FRONT AXLES (Continued)</b>												
44-18	636566	Slinger, oil drive pinion bearing . . . . .	X	X	1	1	1	1	1			
	916372	Slinger, oil rear pinion bearing (Model 27 axle only) . . . . .	X	X	1	1	1	1	1			
44-14	636570	Washer, drive pinion nut. . . . .	X	X	1	1	1	1	1			
44-15	A-1445	Yoke, end, universal joint, assembly (Model 25 axle) . . . . .	X		1	1						
44-15	926816	Yoke, end, universal joint, assembly (Model 27 axle) (Up to Serial No. ) . . . . .	X		1	1		1				
		(For axles 928417, 932999, 933003 and 933004, 933008, 933011)										
44-15	936216	Yoke, end, universal joint, assembly (Model 27 axle) (After Serial No. ) . . . . .	X	X	1	1	1	1	1			
		(For axles 937432, 937433, 937436, 937437, 937440, 937443, 941852, 941051) (Propeller shaft to front axle)										
<b>GROUP 20-05 - UNIVERSAL JOINTS AND SHAFTS</b>												
44-61	A-6439	Guide, front axle shaft . . . . .	X	X	2	2	2	2	2			
44-60	A-779	Oil seal, front axle shaft, inner . . . . .	X	X	2	2	2	2	2			
44-62	649769	Washer, thrust, front axle shaft . . . . .	X		2	2		2				
<b>SPICER JOINTS</b>												
48- 1	909459	Kit, shaft and universal joint, left . . . . .	X	X	1	1	1	1	1			
		Consists of:										
44- 5	649783	1 Bushing, wheel bearing spindle										
	649784	1 Gasket, drive flange										
		1 Shaft and universal joint, left, assembly										
65- 2	649778	1 Snap ring										
44-12	909460	Kit, shaft and universal joint, right . . . . .	X	X	1	1	1	1	1			
		Consists of:										
	649783	1 Bushing, wheel bearing spindle										
	649784	1 Gasket, drive flange										
		1 Shaft and universal joint, right, assembly										
	649778	1 Snap ring										
	909476	Kit, universal joint journal, front axle. . . . .	X	X	2	2	2	2	2			
		Consists of:										
		4 Bearing, assembly										
		1 Journal, cross										
	909453	1 Snap ring										
<b>BENDIX JOINTS (OPTIONAL)</b>												
46- 5	A-6288	Ball, universal joint, center. . . . .	X		2	2	2	2	2			
46- 4	A-6289	Ball, universal joint, .872" . . . . .	X		*	*	*	*	*			
	A-6290	Ball, universal joint, .873" . . . . .	X		*	*	*	*	*			
	A-6291	Ball, universal joint, .874" . . . . .	X		*	*	*	*	*			
	A-6292	Ball, universal joint, .875" . . . . .	X		*	*	*	*	*			
	A-6293	Ball, universal joint, .876" . . . . .	X		*	*	*	*	*			
	A-6294	Ball, universal joint, .877" . . . . .	X		*	*	*	*	*			
		(* ) As Required										

Fig. and Ref. No.	Part Number	DESCRIPTION	MODELS								
			V6	4F	CJ3B	CJ5	CJ5A	CJ6A	DJ5	DJ6	
GROUP 20-05 - UNIVERSAL JOINTS AND SHAFTS (Continued)											
BENDIX JOINTS (OPTIONAL)											
46- 4	A-6295	Ball, universal joint, .878" . . . . .	X	*	*	*	*	*	*		
	800611	Kit, shaft and universal joint, left . . . . .	X	1	1	1	1	1	1		
Consists of:											
46- 1		1 Shaft and universal joint, left, assembly									
	649783	1 Bushing, spindle									
	649784	1 Gasket, drive flange									
	800612	Kit, shaft and universal joint, right. . . . .	X	1	1	1	1	1	1		
Consists of:											
		1 Shaft and universal joint, right, assembly									
	649783	1 Bushing, spindle									
	649784	1 Gasket, drive flange									
46- 2	A-6278	Pin, groove, universal joint . . . . .	X	2	2	2	2	2	2		
46- 3	A-6279	Pin, center ball. . . . .	X	2	2	2	2	2	2		
RZEPPA JOINTS (OPTIONAL)											
	800613	Kit, shaft and universal joint, left, assembly . . . . .	X	1	1	1	1	1	1		
Consists of:											
47- 2		1 Shaft and universal joint, left, assembly									
	649783	1 Bushing, spindle									
47- 1	649778	1 Snap ring									
	649784	1 Gasket, drive flange									
	800614	Kit, shaft and universal joint, right, assembly . . . . .	X	1	1	1	1	1	1		
Consists of:											
		1 Shaft and universal joint, right, assembly									
	649783	1 Bushing, spindle									
47- 1	649778	1 Snap ring									
	649784	1 Gasket, drive flange									
	921758	Kit, repair, universal joint (For 1 joint). . . . .	X	2							
Consists of:											
	A-1721	6 Ball, universal joint									
	A-1719	1 Cage									
	802314	1 Race, inner									
	A-1724	1 Retainer									
	A-1725	3 Screw, retainer									
	A-1726	1 Snap ring									
	921759	Kit, repair, universal joint (For Rzeppa or Bendix Shaft & U. Joint Assy's.) (For 1 joint) . . . . .	X	2	2	2	2	2	2		
Consists of:											
47- 4	A-1721	6 Ball, universal joint									
47- 5	A-1719	1 Cage									
47- 3	810086	1 Race, inner									
47- 6	810095	1 Ring, retaining, inner axle shaft									
47- 7	810087	Inner shaft and snap ring, left . . . . .	X	1	1	1	1	1	1		
	810088	Inner shaft and snap ring, right. . . . .	X	1	1	1	1	1	1		
(*) As Required											

Fig. and Ref. No.	Part Number	DESCRIPTION	MODELS									
			V6	4F	CJ3B	CJ5	CJ5A	CJ6	CJ6A	DJ5	DJ6	
<b>GROUP 20-06 - STEERING KNUCKLE AND SPINDLE</b>												
53- 8	805783	Knuckle and arm, steering, left . . . . .	X		1	1	1	1	1			
49-12	805784	Knuckle and arm, steering, right . . . . .	X	X	1	1	1	1	1			
45-10	812222	Knuckle, steering, left, assembly (For axle 812246) . . . . .	X	X								1 1
	939625	Knuckle, steering, left, assembly (For axle 943566) . . . . .	X	X								1 1
45-17	812223	Knuckle, steering, right, assembly (For axle 812246) . . . . .	X	X								1 1
	939624	Knuckle, steering, right, assembly (For axle 943566) . . . . .	X	X								1 1
49-19	A-821	Bolt, stop, steering . . . . .	X	X	2	2	2	2	2			
45- 3	GM-179840	Bolt, stop, steering . . . . .	X	X								2 2
49-20	GM-124925	Nut, 3/8"-24 . . . . .	X	X	2	2	2	2	2			
45- 2	644438	Nut, 3/8"-16 . . . . .	X	X								2 2
45-12	812203	Arm, steering, left (For axle 812246) . . . . .	X	X								1 1
	942811	Arm, steering, left (For axle 943566) . . . . .	X	X								1 1
45-16	812204	Arm, steering, right (For axle 812246) . . . . .	X	X								1 1
	942810	Arm, steering, right (For axle 943566) . . . . .	X	X								1 1
45-10	649783	Bushing, wheel bearing spindle . . . . .	X	X	2	2	2	2	2			
45- 1	GM-191758	Fitting, lubricating . . . . .	X	X								4 4
45-14	643784	Key, draw, steering knuckle pin (For axle 812246) . . . . .	X	X								* *
45-11	GM-124549	Key, steering arm (For axle 812246) . . . . .	X	X								2 2
	932029	Key, steering arm, 1/4" x 1/4" x 3/4" (For axle 943566) . . . . .	X	X								2 2
	939626	Kit, repair, steering knuckle (For one knuckle) (For axle 943566) . . . . .	X	X								1 1
		Consists of:										
	928987	1 Bearing, thrust, steering knuckle										
		2 Bushing, steering knuckle (Bronze)										
	928981	1 Key, draw, steering knuckle)										
		1 Key, draw, steering knuckle) (Use one as required)										
	928980	1 Key, draw, steering knuckle)										
	939630	1 Lock, retainer, steering knuckle pin oil seal										
	932024	1 Oil seal, steering knuckle pin										
	928982	1 Pin, steering knuckle										
		1 Plug, steering knuckle										
	932025	1 Retainer, steering knuckle pin oil seal										
	928985	2 Shim, steering knuckle, .015"										
	908226	Kit, steering knuckle oil seal (For 2 wheels) . . . . .	X	X	1	1	1	1	1			
		Consists of:										
		2 Oil seal, felt										
49-25	908005	2 Oil seal, rubber and backing ring, assembly										
49-30	909854	4 Plate, seal retainer										
49-23	908006	Kit, steering knuckle oil seal (For 1 wheel) . . . . .	X	X	1	1	1	1	1			
	915664	Consists of:										
		1 Oil seal, felt										
49-25	908005	1 Oil seal, rubber and backing ring, assembly										
49-30	909854	2 Plate, seal retainer										
49-23	908006	Kit, steering knuckle pivot pin (For both knuckles) (For axle 812246) . . . . .	X	X								1 1
	802233	Consists of:										
		2 Bearing, thrust, steering knuckle										
45-13	643778	4 Bushing, steering knuckle										
45-14	647567	2 Pin, lock, pivot pin										
	646854	2 Pin, pivot, steering knuckle										
45- 8	647568											

(\* ) As Required

Fig. and Ref. No.	Part Number	DESCRIPTION	MODELS									
			V6	4F	CJ3B	CJ5	CJ5A	CJ6A	DJ5	DJ6		
<b>GROUP 20-06 - STEERING KNUCKLE AND SPINDLE (Continued)</b>												
45- 5	GM-117920	4 Plug, expansion, 1-1/16"										
	GM-272120	4 Shim, steering knuckle .003"										
		Nut, hex. hd., 7/16"-14 (Stop screw lock nut) (For axle 943566) . . . . .	X	X							2	2
45- 6	643782	Nut, steering arm (For axle 812246) . . . . .	X	X							2	2
	932030	Nut, hex., 7/8"-16 (Steering arm) (For axle 943566) . . . . .	X	X							2	2
45- 7	GM-137204	Pin, cotter, 1/8" x 1-1/2" (For axle 812246) . . . . .	X	X							2	2
		(Steering arm nut)										
	GM-103409	Pin, cotter, 3/16" x 1-1/2" (For axle 943566) . . . . .	X	X							2	2
		(Steering arm nut)										
49-11	GM-444588	Plug, filler, steering knuckle . . . . .	X	X	2	2	2	2	2	2		
49-24	802498	Screw and lockwasher, hex. hd., 5/16"-24 x 11/16" . . . . .	X	X	16	16	16	16	16	16		
		(Oil seal to steering knuckle)										
	GM-102467	Screw, set, sq. hd., 7/16"-14 x 1" (For axle 943566) . . . . .	X	X							2	2
		(Stop screw)										
45- 9	805459	Shim set, steering knuckle (For axle 812246) . . . . .	X	X							1	1
		Consists of:										
		2 Shim, steering knuckle, .003"										
		2 Shim, steering knuckle, .010"										
		4 Shim, steering knuckle, .030"										
49- 9	649782	Spindle and bushing, wheel bearing assembly. . . . .	X	X	2	2	2	2	2	2		
<b>GROUP 20-07 - KING PIN AND DRIVE FLANGE</b>												
		NOTE 1: Up to Serial No. 57348-48092 CJ3B (4F Engine Only) 57548-83072 CJ5 (4F Engine Only) 57748-15006 CJ6 (4F Engine Only)										
		NOTE 2: After Serial No. 57348-48091 CJ3B (4F Engine Only) 57548-83071 CJ5 57748-15005 CJ6										
49-14	910901	Cap, king pin bearing. . . . .	X	X	4	4	4	4	4	4		
	GM-181376	Bolt, hex. hd., 3/8"-24 x 1-5/8" ( See Note No. 1) . . . . .		X	4	4	4	4	4	4		
49-15	GM-120677	Bolt, hex. hd., 3/8"-24 x 1-1/2" (12 See Note No. 1) (16-See Note No. 2) . . . . .	X	X	16	16	16	16	16	16		
	GM-120382	Lockwasher, 3/8" . . . . .	X	X	16	16	16	16	16	16		
		(King pin bearing cap to steering knuckle)										
49-22	52940	Cone and rollers, king, pin bearing. . . . .	X	X	4	4	4	4	4	4		
49-21	52941	Cup, king pin bearing. . . . .	X	X	4	4	4	4	4	4		
65- 3	A-868	Flange, drive, axle shaft. . . . .	X	X	2	2	2	2	2	2		
65-22	A-760	Bolt, hex. hd., 3/8"-16 x 1-1/2". . . . .	X	X	12	12	12	12	12	12		
65-21	GM-120382	Lockwasher, 3/8" . . . . .	X	X	12	12	12	12	12	12		
		(Drive flange to hub)										
65- 4	649784	Gasket, drive flange . . . . .	X	X	2	2	2	2	2	2		
	A-824	Pin, king, bearing cap (For old style 3 piece cap on first vehicles). . . . .		X	4	4	4	4	4	4		
	A-825	Pin, lock, king pin to bearing cap (For old style 3 piece cap on first vehicles). . . . .		X	4	4	4	4	4	4		
49-13	A-6882	Shim, set, king pin bearing . . . . .	X	X	1	1	1	1	1	1		

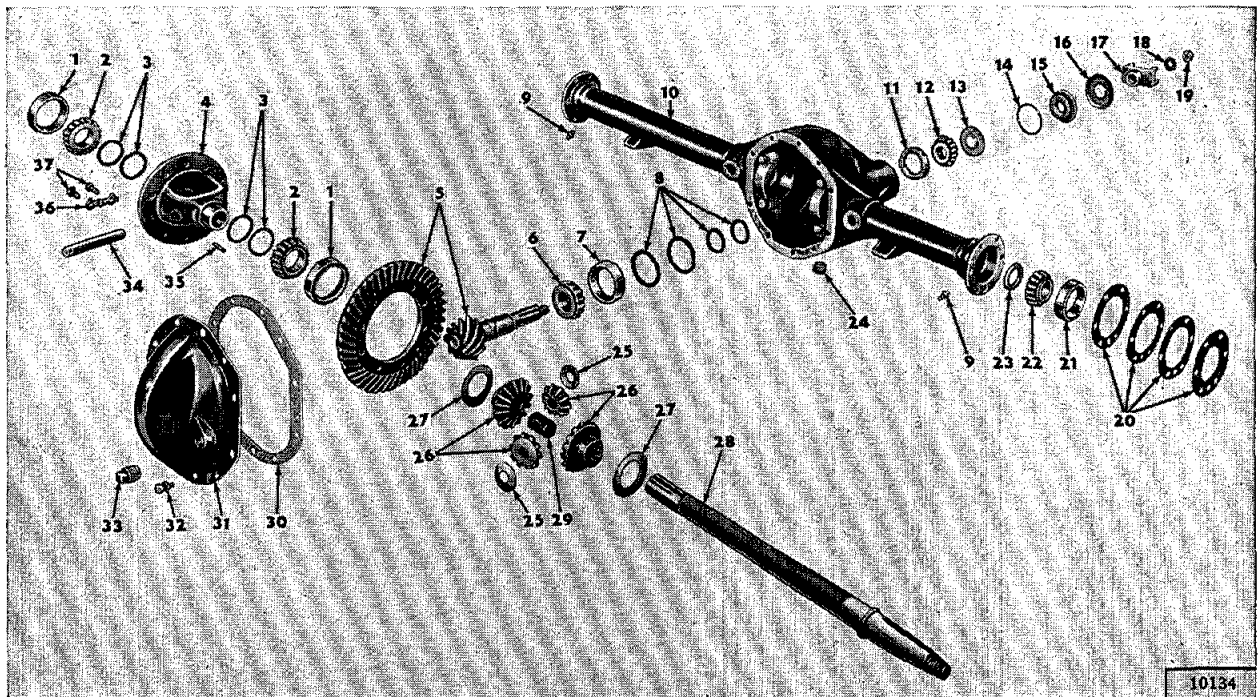


FIG. 50 - REAR AXLE (CJ3B) (CJ5) (CJ6) (CJ5A) (CJ6A)

Ref. No.	Part No.	Description	Group No.	Ref. No.	Part No.	Description	Group No.
1	52980	Cup, differential bearing	21-03	20	805524	Shim set	21-05
2	52979	Cone and rollers	21-03	21	52800	Cup, shaft bearing	21-05
3	806483	Shim set	21-03	22	52799	Cone and rollers, shaft bearings	21-05
4	802562	Case, differential	21-03	23	640959	Oil seal, carrier end	21-05
5	937824	Kit, drive gear and pinion	21-03	24	636577	Plug, drain, axle housing	21-02
6	807266	Cone and rollers pinion bearing, inner	21-04	25	645790	Washer, thrust, pinion mate	21-03
7	52877	Cup, pinion bearing, inner	21-04	26	802260	Gear set, side gear and pinion mate	21-03
8	649228	Shim set	21-04	27	645789	Washer, thrust, side gear	21-03
9	GM-191758	Fitting	21-05	28	912626	Shaft, rear axle, right	21-05
10	932939	Housing, rear axle	21-02	29	640765	Spacer (Center block)	21-03
11	52879	Cup, pinion bearing, outer	21-04	30	936180	Gasket, housing cover	21-02
12	52878	Cone and rollers pinion bearing, outer	21-04	31	936282	Cover, axle housing	21-02
13	908301	Slinger, oil	21-04	32	GM-9409097	Screw and lockwasher, cover to housing	21-02
14	636565	Gasket, pinion, oil seal	21-04	33	GM-103869	Plug filler, axle housing	21-02
15	639265	Oil seal, pinion bearing	21-04	34	805327	Shaft, case pinion	21-03
16	642121	Shield, dust, universal yoke	21-04	35	636360	Pin, lock, pinion shaft	21-03
17	807693	Yoke	21-04	36	802561	Strap, lock, drive gear screw	21-03
18	636570	Washer, pinion nut	21-04	37	917292	Screw, axle drive gear	21-03
19	801367	Nut, pinion	21-04				

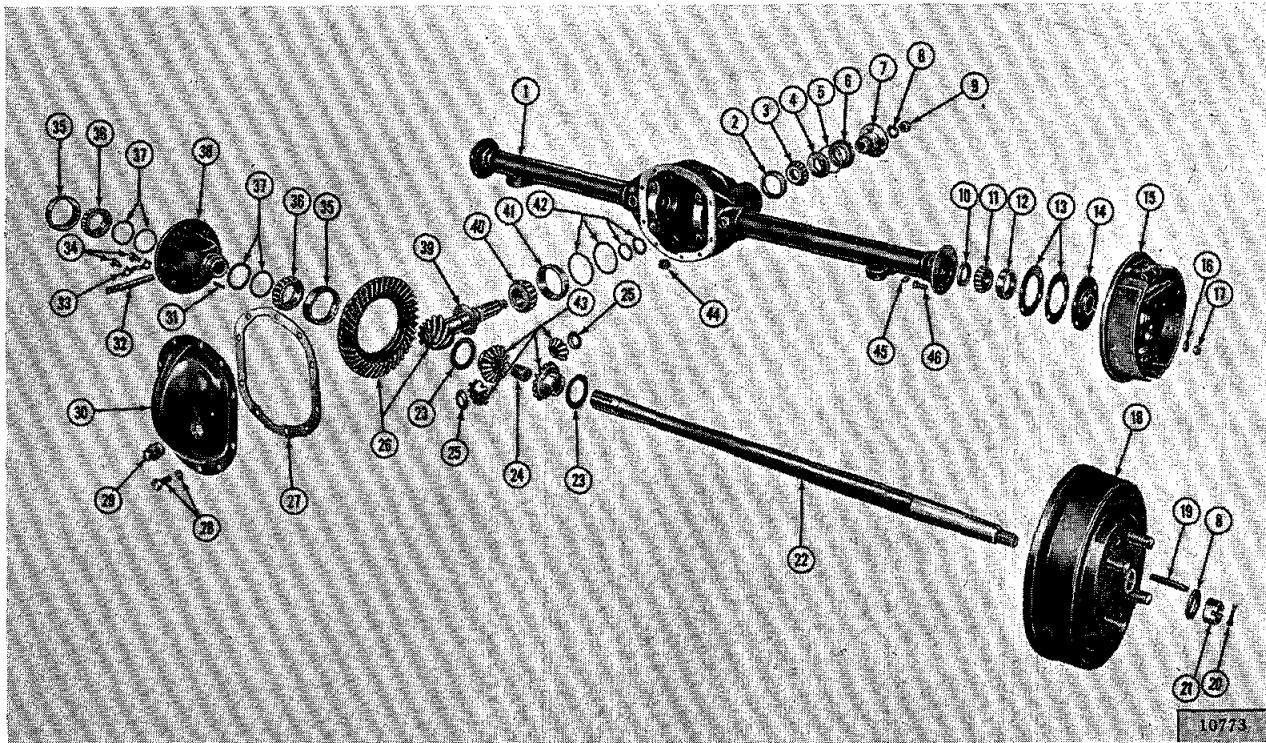


FIG. 51 - REAR AXLE (DJ5) (CJ6)

Ref. No.	Part No.	Description	Group No.	Ref. No.	Part No.	Description	Group No.
1	926795	Housing, rear axle	21-02	25	645790	Washer, thrust, pinion mate	21-03
2	926804	Cup, drive pinion bearing, outer	21-04	26	934894	Kit, axle drive gear and pinion	21-03
3	926802	Cone and roller, bearing, outer	21-04	27	929874	Gasket, axle housing cover	21-02
4	636566	Slinger, oil drive pinion	21-04	28	GM-9409097	Screw and lockwasher, hex. hd., 5/16"-18 x 5/8"	21-02
5	636565	Gasket, pinion oil seal	21-04	29	GM-103869	Plug, pipe, 3/4" sq. hd.	21-02
6	639265	Oil seal, drive pinion bearing	21-04	30	641380	Cover	21-02
7	926816	Flange, "U" joint	21-04	31	636360	Pin, lock	21-03
8	636570	Washer, flat	21-04	32	805327	Shaft, pinion mate	21-03
9	801367	Nut, drive pinion	21-04	33	802561	Strap, lock	21-03
10	640959	Oil, seal, shaft (Inboard)	21-05	34	917292	Screw, drive gear	21-03
11	52799	Cone and roller, axle shaft	21-05	35	926800	Cup, differential bearing	21-03
12	52800	Cup, axle shaft	21-05	36	925446	Cone and roller, differential bearing	21-03
13	805524	Shim set, axle shaft bearing	21-05	37	648061	Shim, set, adjusting	21-03
14	803334	Retainer and seal	21-05	38	926797	Case, differential	21-03
15	803790	Brake, rear, right	24-02	39	636566	Slinger, oil pinion bearing, rear	21-04
16	GM-120382	Lockwasher, 3/8"	24-02	40	926803	Cone and roller bearing, inner	21-04
17	909393	Nut, hex., 3/8"-24	24-02	41	926805	Cup, drive pinion bearing, inner	21-04
18	803794	Hub and drum, rear, right	25-02	42	929409	Shim set, differential bearing	21-04
19	803425	Key, rear axle shaft	21-05	43	926544	Gear set	21-03
20	GM-137204	Pin, cotter, 1/8" x 1-1/2"	21-05	44	636577	Plug, pipe, 3/4" countersunk	21-02
21	GM-427640	Nut, hex., slotted, 3/4"-16	21-05	45	GM-191758	Fitting	21-05
22	933365	Shaft, rear axle	21-05	46	803908	Bolt, hex. hd., 3/8"-24 x 1"	24-02
23	A-795	Washer, thrust, side gear	21-03				
24	641384	Spacer, axle shaft (Center block)	21-03				